



**HAL**  
open science

# Finite Elements for a Beam System With Nonlinear Contact Under Periodic Excitation

Hamad Hazim, B. Rousselet

► **To cite this version:**

Hamad Hazim, B. Rousselet. Finite Elements for a Beam System With Nonlinear Contact Under Periodic Excitation. Etude de la propagation ultrasonore en milieux non homogènes en vue du contrôle non-destructif, Jun 2008, France. pp.149. hal-00418504

**HAL Id: hal-00418504**

**<https://univ-cotedazur.hal.science/hal-00418504v1>**

Submitted on 11 Oct 2009

**HAL** is a multi-disciplinary open access archive for the deposit and dissemination of scientific research documents, whether they are published or not. The documents may come from teaching and research institutions in France or abroad, or from public or private research centers.

L'archive ouverte pluridisciplinaire **HAL**, est destinée au dépôt et à la diffusion de documents scientifiques de niveau recherche, publiés ou non, émanant des établissements d'enseignement et de recherche français ou étrangers, des laboratoires publics ou privés.

# Finite Elements for a Beam System With Nonlinear Contact Under Periodic Excitation

H. Hazim, B. Rousselet

**Abstract** Solar arrays are structures which are connected to satellites; during launch, they are in a folded position and submitted to high vibrations. In order to save mass, the flexibility of the panels is not negligible and they may strike each other; this may damage the structure. To prevent this, rubber snubbers are mounted at well chosen points of the structure; a prestress is applied to the snubber; but it is quite difficult to check the amount of prestress and the snubber may act only on one side; they will be modeled as one sided springs (see figure 2).

In this article, some analysis for responses (displacements) in both time and frequency domains for a clamped-clamped Euler-Bernoulli beam model with a spring are presented. This spring can be unilateral or bilateral fixed at a point. The mounting (beam +spring) is fixed on a rigid support which has a sinusoidal motion of constant frequency.

The system is also studied in the frequency domain by sweeping frequencies between two fixed values, in order to save the maximum of displacements corresponding to each frequency. Numerical results are compared with exact solutions in particular cases which already exist in the literature.

On the other hand, a numerical and theoretical investigation of nonlinear normal mode (NNM) can be a new method to describe nonlinear behaviors, this work is in progress.

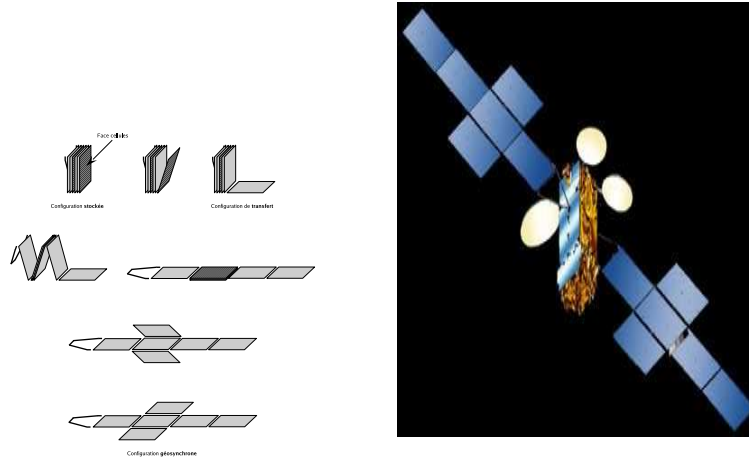
---

H.Hazim

Université de Nice Sophia-Antipolis, Laboratoire J.A. Dieudonné U.M.R. C.N.R.S. 6621, Parc Valrose, F 06108 Nice, Cedex 2 e-mail: hamad.hazim@unice.fr

B. Rousselet

Université de Nice Sophia-Antipolis, Laboratoire J.A. Dieudonné U.M.R. C.N.R.S. 6621, Parc Valrose, F 06108 Nice, Cedex 2 e-mail: br@math.unice.fr



**Fig. 1** At left: solar arrays from folded to final position, at right: picture for the satellite AMC12 from Thales Alenia Space company

## 1 Introduction

### 1.1 Previous Works

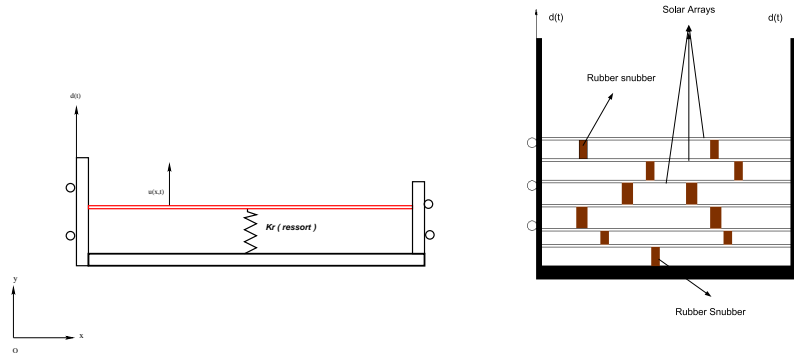
In articles [1], [4], [5] et [10], proposed by Thales Alenia Space research team, the dynamic of a beam system with a nonlinear contact force, under a periodic excitation given as an imposed acceleration form is studied both numerically and experimentally. When sweeping frequencies in an interval which contains eigen frequencies of the beam, resonance phenomena appear as well as new frequencies caused by the unilateral contact.

Finite element method in space domain is used, followed by numerical integration of the ordinary differential systems using specific software like 'STRDYN' of the finite element package DIANA.

The frequency sweeping is done in different ways, one of these way is such as the frequency  $f$  changes as a function of the time  $t$  according to  $f(t) = f_0 2^{st/60}$  where  $s$  is the sweep rate in octaves/min and  $f_0$  is the start frequency of the sweep. Results prove differences between sweep-down and sweep-up around eigen frequencies of the system where solutions are unstable.

At each value of the time  $t$ , computation is done and the maximum of displacement and acceleration are saved.

Finally, comparison is made in time and frequency domains, between linear and nonlinear cases.



**Fig. 2** left: Simplified Mechanical Model, right: folded solar arrays with snubbers

## 1.2 Present Work

This work is part of the phd work of the author under the guidance of B. Rousselet with the support of Thales Alenia Space, France.

Some analysis for responses (displacements) in both time and frequency domain for a clamped-clamped Euler-Bernoulli beam model with a linear spring are presented, the spring can be unilateral or bilateral fixed at a point. The mounting (beam +spring) is fixed on a rigid support which has a sinusoidal motion of constant frequency.

The system is also studied in the frequency domain by sweeping frequencies between two fixed values, such as saving the maximum of displacements corresponding to each frequency.

Numerical results are compared with exact solutions in particular cases which already exist in the literature.

On the other hand, a numerical and theoretical investigation of nonlinear normal mode (NNM) can be a new method to distinguish linear from nonlinear cases.

## 2 Simplified Mechanical Model

The study of the total dynamic behavior of solar arrays in a folded position with snubbers are so complicated, that to simplify, a solar array is modeled by a clamped-clamped Bernoulli beam with one-sided linear spring. This system is fixed on a shaker which has a vibratory motion  $d(t)$  see figure (2).

The motion of this beam system is modeled by the following PDEs with boundary conditions :  $u(0,t) = u(L,t) = d(t)$  and  $\partial_x u(0,t) = \partial_x u(L,t) = 0$ :

$$\text{Bilateral spring: } \rho S \ddot{u}(x, t) + EI u^{(iv)}(x, t) = k_r (d(t) - u(x_0, t)) \delta_{x_0} \quad (1)$$

$$\text{Unilateral spring: } \rho S \ddot{u}(x, t) + EI u^{(iv)}(x, t) = k_r (d(t) - u(x_0, t))_+ \delta_{x_0} \quad (2)$$

$u_+$  is the function defined by  $u_+ = \frac{u+|u|}{2}$   $L = 0.485$  m beam length.  
 $k_r =$  spring stiffness.  $d(t) = -\frac{a}{(2\pi f)^2} \sin(2\pi f t)$  is the shaker motion.  
 $\rho = 2700$  kg/m<sup>3</sup> beam density.  $S = 7,5 \cdot 10^{-4}$  m<sup>2</sup> cross sectional area.  
 $E = 7.10^{10}$  N/m<sup>2</sup> Young's modulus.  $I = 1,41 \cdot 10^{-8}$  m<sup>4</sup> second moment of area.  
 This data are taken from [4]. The classical Hermite cubic finite element approximation is used here to find an approximate solution for equations (1) and (2), we find then two ordinary differential systems in the form :

$$M \ddot{q} + K q = k_r (d(t) - q_{x_0}) \vec{e}_{x_0} \quad (3)$$

$$M \ddot{q} + K q = k_r (d(t) - q_{x_0})_+ \vec{e}_{x_0} \quad (4)$$

$M$  et  $K$  are respectively the mass and the stiffness assembled matrices,  $q$  is the vector of degree of freedom of the beam,  $q_i = (u_i, \partial_x u_i)$ ,  $i = 1, 2, \dots, n$ . To each node are associated two degrees of freedom, the displacement and its derivative.

To integrate numerically systems (3) and (4), we use the Scilab routines "ODE's" followed by the FFT (Fast Fourier Transformation) to find frequencies of solutions, there is no special treatment for "ODE" routine to deal with the local non-differentiable nonlinearity  $(d(t) - u(x_0, t))_+$ .

### 3 Numerical Results

#### 3.1 Highlights on the linearized system and the nonlinear effects

There are two linear cases, the first one when there is no spring attached to the beam, and the second case is such as a linear spring is always attached to the beam ( bilateral spring ). The system becomes nonlinear when the spring becomes one-sided when the prestress is not well tuned. The nonlinearity has a special form, it is locally not differentiable but it is lipchitz.

Without spring, the motion has the following linear system of equation :

$$M \ddot{q} + K q = 0 \quad (5)$$

The eigen frequencies of the motion are easily calculated by computing the generalized eigen values of  $M$  and  $K$ , this calculus can be done using software like Scilab

[9]. We are interested by the first three eigen frequencies of the system, we note that the precision depends on the number of the finite elements used for the modeling of the system. We verify that ten finite elements give a good approximation for the first three eigen frequencies and their values are respectively :334.21622Hz, 921.48815Hz and 1807.7966Hz. As known, the eigen-frequencies of a Bernoulli beam could be calculated using this formula:

$f_i = \frac{1}{2\pi} \sqrt{\mu_i^4 \frac{EI}{M^4}}$ ,  $\mu_i$   $i = 1, 2, 3, \dots, n$  are given in [6].  $\mu_1 = 4.73$ ,  $\mu_2 = 7.853$  and  $\mu_3 = 10.996$  give  $f_1 = 334.19889Hz$ ,  $f_2 = 921.19996Hz$  and  $f_3 = 1806.1432Hz$ . The nonlinearity on the system modifies the motion by adding new frequencies, subharmonics and superharmonics, besides the eigen frequencies. When the system is under periodic excitation, new frequencies appear also, there are many combinations of the excitation frequency with the system frequencies. These new frequencies appears in FFT of the system and also in the sweep test. There are many ways to calculate these frequencies, harmonic balance method and nonlinear normal mode (MNN) and asymptotic expansions methods ([7]).

### 3.2 One Node Finite Element Model Without Periodic Excitation

In this case, the beam is modeled by two finite elements without periodic excitation. Equations of displacement and its derivative are independent here because of the structure of the mass and stiffness matrices:

$$M = \begin{pmatrix} 0.3647893 & 0 \\ 0 & 0.0005500 \end{pmatrix} \text{ and } K = \begin{pmatrix} 1661090 & 0 \\ 0 & 32560.825 \end{pmatrix}.$$

To find eigen frequencies of the system in the linear case (system without contact), we just have to calculate the generalized eigen values of  $M$  and  $K$ .

The motion is divided into two phases: the first one when the beam touches the spring and another one when the beam does not touch the spring. The spring mass is negligible beside the beam mass, the equations of displacement of these two phases are respectively :

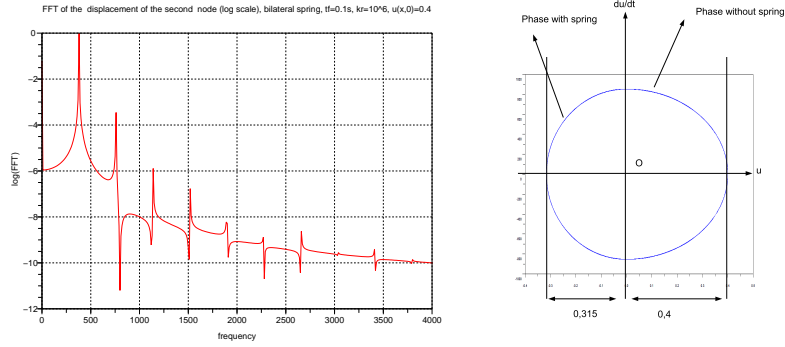
$$M(1, 1)\ddot{u} + (K(1, 1) + k_r)u = 0$$

$$M(1, 1)\ddot{u} + K(1, 1)u = 0$$

The boundary conditions are : $u(0, t) = u(L, t) = 0$  and  $\partial_x u(0, t) = \partial_x u(L, t) = 0$ . The period of the solution will be the sum of the half period of the first phase and the second phase :

$$T = \frac{\pi}{\sqrt{\frac{K_{11}(1,1)}{M_{11}(1,1)}}} + \frac{\pi}{\sqrt{\frac{K_{11}(1,1)+k_r}{M_{11}(1,1)}}}$$

the numerical value of the motion frequency  $\frac{1}{T}$  is 384.74186Hz this is in agreement with the numerical calculus. In figure (3), The Fast Fourier Transformation shows frequencies of the system, the first peak correspond to the analytical value. The motion in the phase plane shows a periodic conservative solution.



**Fig. 3** Left: FFT of the displacement of the second node with unilateral spring contact with initial conditions  $u(x, 0) = 0.4$ ,  $\dot{u}(x, 0) = 0$ . Right: solution in the phase space.

### 3.3 One Node Finite Element Model, Beam Under Periodic Excitation

The beam is modeled by two finite elements under periodic prescribed displacement  $d(t)$ . The spring is always fixed in the middle of the beam on a node, it can be unilateral or bilateral.

Figure (4) shows the displacement of the second node (in the middle) of the beam with bilateral and unilateral spring, the period of the motion changes with unilateral spring. Figure (5) shows frequencies of the beam with bilateral and unilateral cases; In the bilateral case, there are two frequencies, the eigen frequency (430 Hz) and the frequency of the shaker (500 Hz); In the unilateral case, there are the system frequency, the shaker frequency and many other superharmonics and subharmonics frequencies due to the contact.

### 3.4 Ten Finite Elements

In this section, the beam is modeled with ten finite elements, this approximation is quite good if we are interested by the first two eigen frequencies of the system.

The spring is always fixed in the middle of the beam on a node, and can be unilateral or bilateral, the whole system is fixed on a shaker which has periodic prescribed displacement  $d(t)$ , we compare the linear with the nonlinear case for the same value of parameters.

Figure (6) shows the displacement in the time domain for bilateral and unilateral

case and their corresponding frequencies using FFT. In the linear case (bilateral spring), the first and the third eigen frequencies are shown, the shaker frequency also (500 Hz); The middle of the beam is node of the second mode. In the nonlinear case (unilateral spring), frequencies corresponding to the first and the third eigen frequencies of the linear case and also the shaker frequency are shown; Many other superharmonics, subharmonics and combination with the shaker frequency appear also due to the non linear contact.

## 4 Frequency Sweep Excitation

Frequency sweep excitation is usually used in the experiments to check the dynamic behavior of mechanical systems. As mentioned before, the beam is under periodic excitation given as a displacement form

$d(t) = -\frac{a}{(2\pi f)^2} \sin(2\pi ft)$ , that means that the beam is under an effort (acceleration)  $\ddot{d}(t) = a \sin(2\pi ft)$ ,  $a$  in  $m/s^2$  is the amplitude of the acceleration and  $f$  in  $Hz$  is the frequency of excitation.

We are just interested by a sweep-up test, for a initial given frequency  $f_0$  and a fixed value of  $a$ . We compute the solution of differential systems, then we save the maximum of the acceleration and the displacement. In a second time, we add a fixed value to  $f_0$ , the frequency step  $df$ . We compute again for  $f_0 + df$  and we save the same quantities for this iteration, the initial conditions are fixed on zero again. We continue our test to reach a fixed frequency  $f_1$  chosen such as to cover the first and the second eigen frequency of the system.

Finally, we plot the maximum saved in each sweep test, then we compare linear with nonlinear cases, we study also the effect of the amplitude  $a$  and the frequency step on the system.

We remark that obtained curves are similar to curves of *FFT*, it is an another method to find frequencies for mechanical systems.

### 4.1 Two Finite Elements

The beam is modeled by two finite elements, the spring is fixed in the middle, the Bernoulli beam is clamped in its both extremities, we just have a free node of two degrees of freedom, the first is the displacement, the second is the derivative of the displacement. The eigen frequency of the linearized system in this case is around  $339Hz$ , the sweep-up begin from  $100Hz$  to  $1000Hz$ , the frequency step  $df = 5Hz$  and the amplitude of excitation  $a = 50m/s^2$ .

In each iteration, the integration time is  $tf = 0.1s$ , the initial conditions are always fixed at  $0 : q(x, 0) = \dot{q}(x, 0) = 0$ ,  $k_r = 10^6 N/m$ .

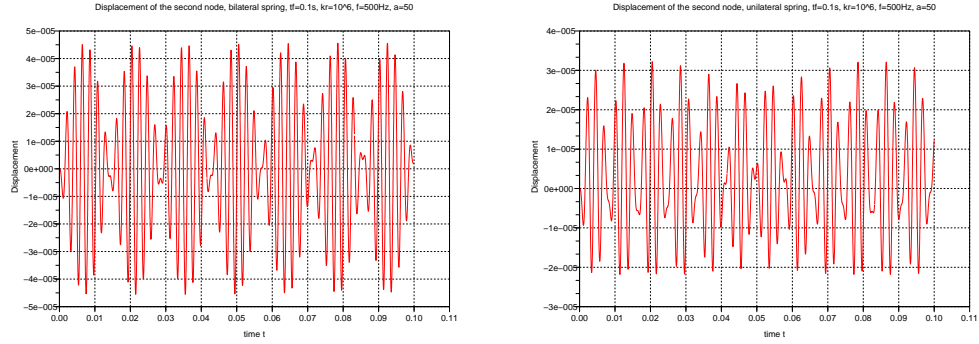


In figure (7), the peak in the bilateral case corresponds to the eigen frequency of the system, its abscissa is  $430\text{Hz}$ . In the unilateral case, the peak corresponds to the eigen frequency too, its abscissa is  $384\text{Hz}$ . Other peaks appear; they are due to the unilateral contact. These results conform well with the FFT in figure (5).

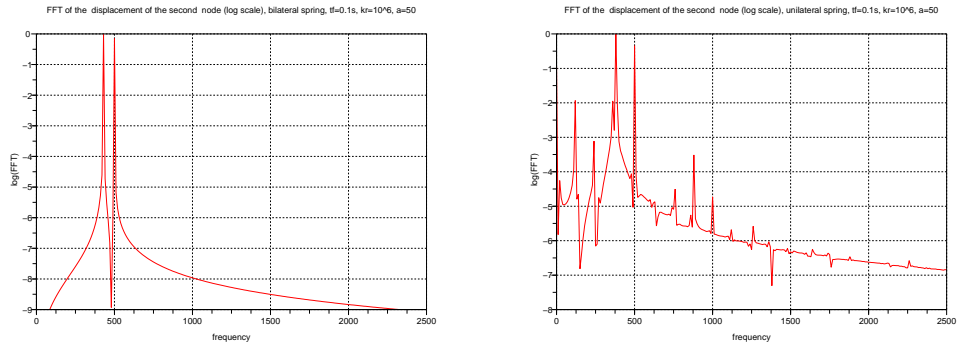
## 4.2 Ten finite elements

The beam is modeled by ten finite elements, the spring always in the middle, the other parameters are the same defined in section 4.1.

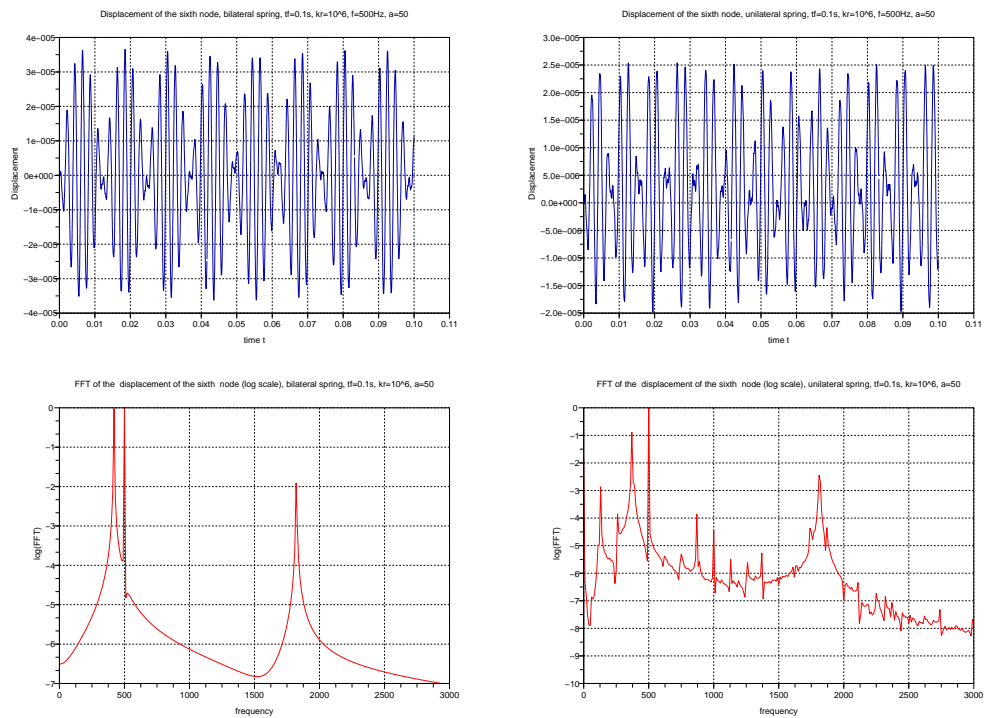
In figure (8), the peak in the bilateral case corresponds to the first eigen frequency of the system, the second eigen frequency does not appear because the imposed displacement is not enough to excite it ( $d(t) = -\frac{a}{(2\pi f)^2} \sin(2\pi ft)$  very small when  $f$  become so high). Peaks in the unilateral case show the system frequencies corresponding to the eigen frequency of the linear system and other frequencies due to the contact. These results conform with the FFT in figure (6) in the interval  $[100, 1000]$  Hz.



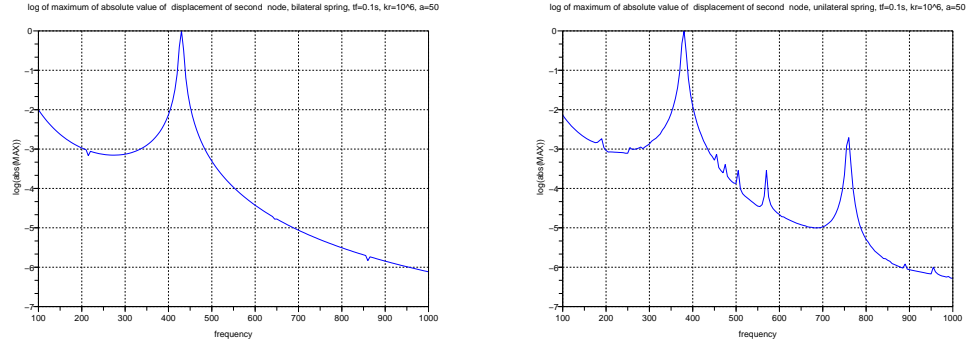
**Fig. 4** Displacement of the second node with **bilateral and unilateral** spring contact under periodic excitation of 500 Hz (Two finite element model)



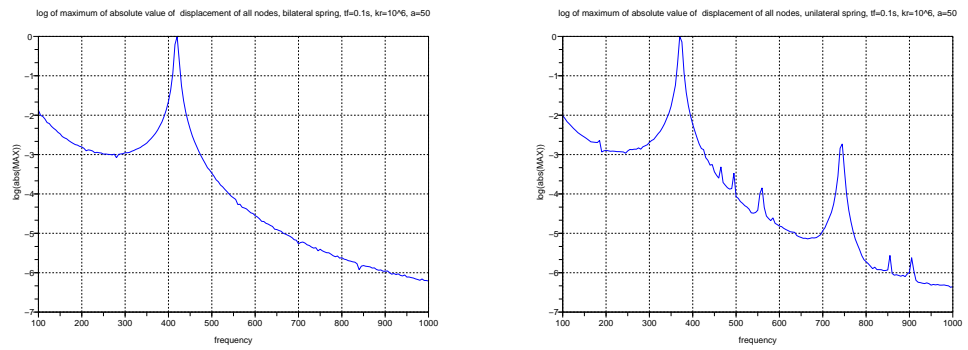
**Fig. 5** FFT of the displacement of the second node with **bilateral and unilateral** spring contact under periodic excitation of 500 Hz (Two finite element model)



**Fig. 6** Displacement and their FFT of the sixth node with **bilateral and unilateral** spring contact under periodic excitation of 500 Hz (Ten finite element model)



**Fig. 7** Maximum of absolute value of the displacement for both **bilateral and unilateral spring**, two finite element model,  $kr = 10^6 N/m$ ,  $a = 50 m/s^2$ ,  $t_f = 0.1s$  (Sweep-up test)



**Fig. 8** Maximum of absolute value of the displacement of all nodes(log scale) for both **bilateral and unilateral spring**, ten finite element model  $kr = 10^6$ ,  $t_f = 0.1s$ ,  $a = 50 m/s^2$  (sweep-up test)

## 5 Conclusion

We have presented some preliminary numerical results to compare the vibrations of a beam equipped with a bilateral or a unilateral spring. Asymptotic expansions using some results of S. Junca ([7]) are in project and compared with numerical results in order to assess the quality of both approaches. In particular accurate computations of non linear normal modes (see [3]) will be considered.

## References

1. J. H. Bonsel, R. H. B. Fey. and H. Nijmeijer: Application of a Dynamic Vibration Absorber to a Piecewise Linear Beam System. *Nonlinear Dynamics* 37: 227-243, 2004.
2. Sergio Bellizzi, Robert Bouc : A new formulation for the existence and calculation of nonlinear normal modes. *Journal of sound and vibration* 287 (2005) 545-569 .
3. D.Jiang,C.Pierre, S.W. Shaw: Large-amplitude non-linéar normal modes of piecewise linear systems. *Journal of sound and vibration* 272 (2004) 869-891
4. Rob H.B. Fey and Berend Winter, Jaap J. Wijker  
Sine sweep and steady - state response of a simplified solar array model with nonlinear support. DETC99/VIB-8027, 1999 ASME Design Engineering Technical Conferences, Las Vegas, Nevada, USA.
5. R.H.B. Fey and F.P.H. van Liempt :  
Sine sweep and steady-state response of a simplified solar array model with nonlinear elements. International conference on Structural Dynamics Modelling, 3-5 june 2002, pp.201-210.
6. M Gérardin Théorie des vibrations: applications la dynamique des structures. Masson Paris 2eme edition 1996
7. Stéphane Junca et Bernard Rousselet: Asymptotic Expansions of Vibrations with Unilateral Contact, proceeding of the GDR 2501- Anglet 2-6 Juin 2008.
8. Richard H. Rand:Lecture Notes on Nonlinear Vibrations, Dept. Theoretical Applied Mechanics Cornell University Ithaca NY 14853
9. Scilab [[www.scilab.org](http://www.scilab.org)]
10. E.L.B. Van De Vorst, M.F.Heertjes D.H. Van Campen and A. De Kraker and R.H. B. Fey: Experimental and numerical analysis of the steady state behavior of a beam system with impact. *Journal of Sound and Vibration* 1998 212(2), 210-225