



HAL
open science

The Method of Strained Coordinates for Vibrations with Weak Unilateral Springs

Stéphane Junca, Bernard Rousselet

► **To cite this version:**

Stéphane Junca, Bernard Rousselet. The Method of Strained Coordinates for Vibrations with Weak Unilateral Springs. IMA Journal of Applied Mathematics, 2011, 76 (02), pp.251-276. 10.1093/ima-mat/hxq045 . hal-00395351v2

HAL Id: hal-00395351

<https://univ-cotedazur.hal.science/hal-00395351v2>

Submitted on 18 Jan 2011

HAL is a multi-disciplinary open access archive for the deposit and dissemination of scientific research documents, whether they are published or not. The documents may come from teaching and research institutions in France or abroad, or from public or private research centers.

L'archive ouverte pluridisciplinaire **HAL**, est destinée au dépôt et à la diffusion de documents scientifiques de niveau recherche, publiés ou non, émanant des établissements d'enseignement et de recherche français ou étrangers, des laboratoires publics ou privés.

The Method of Strained Coordinates for Vibrations with Weak Unilateral Springs

Stéphane Junca ^{*} & Bernard Rousselet [†]

Abstract

We study some spring mass models for a structure having some unilateral springs of small rigidity ε . We obtain and justify mathematically an asymptotic expansion with the method of strained coordinates with new tools to handle such defects, including a non negligible cumulative effect over a long time: $T_\varepsilon \sim 1/\varepsilon$ as usual; or, for a new critical case, we can only expect: $T_\varepsilon \sim 1/\sqrt{\varepsilon}$. We check numerically these results and present a purely numerical algorithm to compute “Non linear Normal Modes” (NNM); this algorithm provides results close to the asymptotic expansions but enables us to compute NNM even when ε becomes larger.

Keywords: nonlinear vibrations, method of strained coordinates, piecewise linear, unilateral spring, approximate nonlinear normal mode.

Mathematics Subject Classification. Primary: 34E15;
Secondary: 26A16, 26A45, 41A80.

1 Introduction

For spring mass models, the presence of a small piecewise linear rigidity can model a small defect which implies unilateral reactions on the structure. So, the nonlinear and piecewise linear function $u_+ = \max(0, u)$ plays a key role in this paper. For nondestructive testing we study a non-smooth nonlinear effect for large time by asymptotic expansion of the vibrations. New features and comparisons with classical cases of smooth perturbations are given, for instance, with the classical Duffing equation: $\ddot{u} + u + \varepsilon u^3 = 0$ and the non classical case: $\ddot{u} + u + \varepsilon u_+ = 0$. Indeed, piecewise linearity is non-smooth: nonlinear and Lipschitz but not differentiable. We give some new results to validate such asymptotic expansions. Furthermore, these tools are also valid for a more general non linearity. A nonlinear crack approach for elastic waves can be found in [12]. Another approach in the framework of non-smooth analysis can be found in [2, 5, 20].

For short time, a linearization procedure is enough to compute a good approximation. But for large time, nonlinear cumulative effects drastically alter the nature of the solution. We will consider the classical method of strained coordinates to compute asymptotic expansions. The idea goes further back to Stokes, who in 1847 calculated periodic solutions for a weakly nonlinear wave propagation problem, see [16, 17, 18, 19] for more details and references therein. Subsequent authors have generally referred to this as the Poincaré method or the Lindstedt method. It is a simple and efficient method which gives us approximate nonlinear normal modes with 1 or more degrees of freedom.

Lindstedt-Poincaré method has been already used in [30] to study NNM of a piecewise linear

^{*}Université de Nice Sophia-Antipolis, JAD laboratory, Parc Valrose, 06108 Nice, France, junca@unice.fr

[†]Université de Nice Sophia-Antipolis, JAD laboratory, Parc Valrose, 06108 Nice, France, br@unice.fr

system with two degrees of freedom. Here the non linearity is somewhat more general. We consider N dimensional systems. Moreover we prove rigorously the validity of the expansion. On the other hand [30] addresses other very interesting open problems such as: bifurcation of solutions, higher order expansions, stability of solutions.

In section 2 we present the method on an explicit case with an internal Lipschitz force. We focus on an equation with one degree of freedom with expansions valid for time of order ε^{-1} or, more surprisingly, $\varepsilon^{-1/2}$ for a degenerate contact.

Section 3 contains a tool to expand $(u + \varepsilon v)_+$ and some accurate estimate for the remainder. This is a new key point to validate the method of strained coordinates with unilateral contact.

In Section 4, we extend previous results to systems with N degrees of freedom, first, with the same accuracy for approximate nonlinear normal modes, then, with less accuracy with all modes. We check numerically these results and present a purely numerical algorithm to compute “Non linear normal Modes” (NNM) in the sense of Rosenberg [23]; see [1] for two methods for the computation of NNM; see [10] for a computation of non linear normal mode with unilateral contact and [15] for a synthesis on non linear normal modes; this algorithm provides results close to the asymptotic expansions but enables to compute NNM even when ε becomes larger.

In Section 5, we briefly explain why we only perform expansions with even periodic functions to compute the nonlinear frequency shift.

Section 6 is an appendix containing some technical proofs and results.

2 One degree of freedom

2.1 Explicit angular frequency

We consider a one degree of freedom spring-mass system (see figure 1): one spring is classical linear and attached to the mass and to a rigid wall, the second is still linear attached to a rigid wall but has a unilateral contact with the mass; this is to be considered as a damaged spring. The force acting on the mass is $k_1 u + k_2 u_+$ where u is the displacement of the mass m , k_1 , the rigidity of the undamaged spring and k_2 , the rigidity of the damaged unilateral spring. We notice that the term u_+ is Lipschitz but not differentiable with respect to u . Assuming that $k_2 = \tilde{\varepsilon} k_1$, $\varepsilon = \tilde{\varepsilon} \omega_0^2$ with $\omega_0^2 = k_1/m$, we can consider the equation:

$$\ddot{u} + \omega_0^2 u + \varepsilon u_+ = 0, \quad \text{with } u_+ = \max(0, u). \quad (1)$$

The associated energy is $E = (\dot{u}^2 + \omega_0^2 u^2 + \varepsilon (u_+)^2)/2$. Therefore, the level sets of $E(u, \dot{u})$

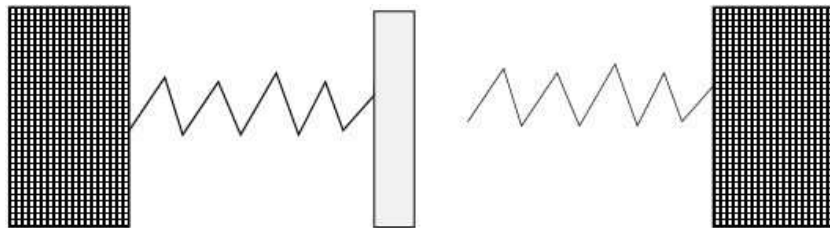


Figure 1: Two springs, on the right it has only a unilateral contact.

will be made of two half ellipses. Indeed, for $u < 0$ the level set is an half ellipse, and for $u > 0$ is another half ellipse. Any solution $u(t)$ is confined to a closed level curve of $E(u, \dot{u})$ and is necessarily a periodic function of t .

More precisely, a non trivial solution ($E > 0$) is on the half ellipse: $\dot{u}^2 + \omega_0^2 u = 2E$, in the phase plane during the time $T_C = \pi/\omega_0$, and on the half ellipse $\dot{u}^2 + (\omega_0^2 + \varepsilon)u = 2E$ during

the time $T_E = \pi/\sqrt{\omega_0^2 + \varepsilon}$. Then the period is exactly $P(\varepsilon) = (1 + (1 + \varepsilon/\omega_0^2)^{-1/2})\pi/\omega_0$, and the exact angular frequency is:

$$\omega(\varepsilon) = 2\omega_0 \left(1 + (1 + \varepsilon/\omega_0^2)^{-1/2}\right)^{-1} = \omega_0 + \frac{\varepsilon}{(4\omega_0)} - \frac{\varepsilon^2}{(8\omega_0^3)} + \mathcal{O}(\varepsilon^3). \quad (2)$$

Let us compare with the angular frequency $\omega_D(\varepsilon)$ for Duffing equation where the nonlinear term is u^3 instead of u_+ . $\omega_D(\varepsilon)$ depends on the amplitude a_0 of the solution (see for instance [16, 17, 18, 19]): $\omega_D(\varepsilon) = \omega_0 + \frac{3}{8\omega_0^2}a_0^2\varepsilon - \frac{15}{256\omega_0^4}a_0^4\varepsilon^2 + \mathcal{O}(\varepsilon^3)$.

2.2 The method of strained coordinates

Now, we compute, with the method of strained coordinates, ω_ε , an approximation of the exact angular frequency $\omega(\varepsilon)$ which is smooth with respect to ε by exact formula (2): $\omega(\varepsilon) = \omega_\varepsilon + \mathcal{O}(\varepsilon^3)$. We expound this case completely to use the same method of strained coordinates later when we will not have such an explicit formula.

Let us define the new time $s = \omega_\varepsilon t$ and rewrite equation (1) with $v_\varepsilon(s) = u_\varepsilon(t)$

$$\omega_\varepsilon^2 v_\varepsilon''(s) + \omega_\varepsilon^2 v_\varepsilon(s) + \varepsilon(v_\varepsilon(s))_+ = 0, \quad \text{with } s = \omega_\varepsilon t, \quad u_\varepsilon(t) = v_\varepsilon(s), \quad (3)$$

To simplify, u_ε is subjected to the following initial conditions: $u_\varepsilon(0) = a_0 > 0$, $\dot{u}_\varepsilon(0) = 0$, i.e. $v_\varepsilon(0) = a_0$ and $v_\varepsilon'(0) = 0$. Similar computations are valid for negative a_0 , see Proposition 2.1 below. With more general data, i.e. when $\dot{u}_\varepsilon(0) \neq 0$, computations are more complicate and give the same approximate angular frequency ω_ε , see section 5.

In the new time s , we use the following **ansatz**

$$\omega_\varepsilon = \omega_0 + \varepsilon\omega_1 + \varepsilon^2\omega_2, \quad v_\varepsilon(s) = v_0(s) + \varepsilon v_1(s) + \varepsilon^2 r_\varepsilon(s). \quad (4)$$

ω_1 and ω_2 are unknown. Since $\omega_\varepsilon^2 = \alpha_0 + \varepsilon\alpha_1 + \varepsilon^2\alpha_2 + \mathcal{O}(\varepsilon^3)$, $\alpha_0 = \omega_0^2$, $\alpha_1 = 2\omega_0\omega_1$, $\alpha_2 = \omega_1^2 + 2\omega_0\omega_2$, we have to find α_1 and α_2 .

We will also use the following expansion, $(u + \varepsilon v)_+ = u_+ + \varepsilon H(u)v + \varepsilon\chi_\varepsilon(u, v)$, justified later, where $H(\cdot)$ is the Heaviside function, equal to 1 if $u > 0$ and else 0. Since $H(\cdot)$ is not differentiable at $u = 0$, the remainder $\varepsilon\chi_\varepsilon(u, v)$ is not the classical Taylor's remainder. This lack of smoothness is a problem to validate mathematically the Lindstedt-Poincaré method. The remainder problem is studied in section 3 below.

Now, replacing ansatz (4) in (3) we obtain differential equations and initial data for v_0, v_1, r_ε with $L(v) = -\alpha_0(v'' + v)$:

$$L(v_0) = -\alpha_0(v'' + v) = 0, \quad v_0(0) = a_0, v_0'(0) = 0, \quad (5)$$

$$L(v_1) = (v_0)_+ + \alpha_1 v_0'', \quad v_1(0) = 0, v_1'(0) = 0, \quad (6)$$

$$L(r_\varepsilon) = H(v_0)v_1 + \alpha_2 v_0'' + \alpha_1 v_1'' + R_\varepsilon(s), \quad r_\varepsilon(0) = 0, r_\varepsilon'(0) = 0. \quad (7)$$

Now we compute, α_1, v_1 and then α_2 . We have $v_0(s) = a_0 \cos(s)$. A key point in the method of strained coordinates is to keep bounded v_1 and r_ε for large time by a choice of α_1 for u_1 and α_2 for r_ε . For this purpose, we avoid resonant or **secular** term in the right-hand-side of equations (6), (7). Let us first focus on α_1 . Notice that, $v_0(s) = a_0 \cos(s)$ and $a_0 > 0$, so $(v_0)_+ = a_0 \left(\frac{\cos s}{2} + \frac{|\cos s|}{2}\right)$. Note that $|\cos(s)|$ has no term with frequencies ± 1 , since there are only even frequencies. Thus $((v_0)_+ - \alpha_1 v_0) = a_0 \cos(s)(1/2 - \alpha_1) + a_0 |\cos(s)|/2$ has no secular term if and only if $\alpha_1 = 1/2$, so $\omega_1 = 1/(4\omega_0)$. Now, v_1 satisfies: $L(v_1) = a_0 |\cos s|/2$. To remove secular term in the equation (7) we have to obtain the Fourier expansion for

$H(v_0)$ and v_1 . Some computations yield:

$$|\cos(s)| = \frac{2}{\pi} - \frac{4}{\pi} \sum_{k=1}^{+\infty} \frac{(-1)^k}{4k^2 - 1} \cos(2ks), \quad (8)$$

$$v_1(s) = \frac{-a_0}{\pi\omega_0^2} \left(1 - \cos(s) - 2 \sum_{k=1}^{+\infty} \frac{(-1)^k}{(4k^2 - 1)^2} (\cos(2ks) - \cos(s)) \right), \quad (9)$$

$$H(\cos(s)) = \frac{1}{2} + \frac{2}{\pi} \sum_{k=1}^{+\infty} \frac{(-1)^j}{2j+1} \cos((2j+1)s).$$

To remove secular term of order one in (7), it suffices to take α_2 such that:

$$0 = \int_0^{2\pi} [H(v_0(s))v_1(s) + \alpha_2 v_0''(s) + \alpha_1 v_1''(s)] \cdot v_0(s) ds \quad (10)$$

For Duffing equation, see [16, 17, 18], the source term involves only few complex exponentials and the calculus of α_2 is explicit. For general smooth source term, Fourier coefficients decay very fast. Here, we have an infinite set of frequencies for v_1 and $H(v_0)$, with only an algebraic rate of decay for Fourier coefficients. So, numerical computations are needed to compute a large number of Fourier coefficients. For our first simple example, we can compute explicitly α_2 . After lengthy and tedious computations involving numerical series, we have from (10) and (8), (9), to evaluate a numerical series which yields $\alpha_2 = -3(4\omega_0)^{-2}$ thus $\omega_2 = -(2\omega_0)^{-3}$ as we have already obtained in (2). In more general cases α_2 can be computed numerically but not exactly. The mathematical result is stated in Proposition 2.1 below. The technical proof of the Proposition 2.1 is postponed to the appendix.

We obtain in figure 2 first modes of the Fourier spectra for $v_0(\omega_\varepsilon t) + \varepsilon v_1(\omega_\varepsilon t)$ when $a_0 = 1$.

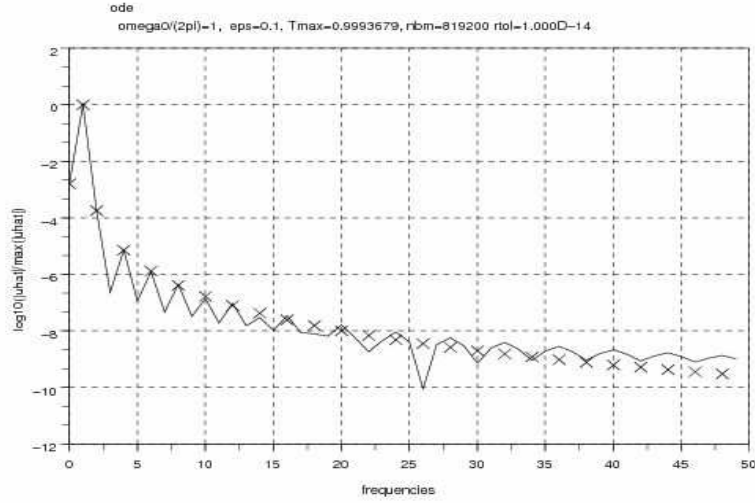


Figure 2: $v_1, \log_{10} \left(\frac{|\hat{u}_\varepsilon|}{\max |\hat{u}_\varepsilon|} \right)$

Proposition 2.1 *Let u_ε be the solution of (1) such that $u_\varepsilon(0) = a_0 > 0$ and $\dot{u}_\varepsilon(0) = 0$, then there exists $\gamma > 0$, such that, for all $t < T_\varepsilon = \gamma\varepsilon^{-1}$, we have the following expansion with $\omega_\varepsilon = \omega_0 + \frac{\varepsilon}{4\omega_0} - \frac{\varepsilon^2}{(2\omega_0)^3}$ and $v_1(\cdot)$ is given by (9):*

$$u_\varepsilon(t) = a_0 \cos(\omega_\varepsilon t) + \varepsilon v_1(\omega_\varepsilon t) + \mathcal{O}(\varepsilon^2) \quad \text{in } C^2([0, T_\varepsilon], \mathbb{R}).$$

Examples from Proposition 2.1 have angular frequency independent of the amplitude. Equation (1) is homogeneous. Indeed, it is a special case, as we can see in the non homogeneous following cases. In these cases, we assume that the spring is either not in contact with the mass at rest ($b > 0$) or with a prestress at rest ($b < 0$).

Proposition 2.2 (Nonlinear dependence of angular frequency)

Let b be a real number and let u_ε be the solution of:

$$\ddot{u} + \omega_0^2 u + \varepsilon a(u - b)_+ = 0, \quad u_\varepsilon(0) = a_0 + \varepsilon a_1, \quad \dot{u}_\varepsilon(0) = 0. \quad (11)$$

If $|a_0| > |b|$ then there exists $\gamma > 0$, such that, we have the following expansion in $C^2([0, T_\varepsilon], \mathbb{R})$ where $T_\varepsilon = \gamma\varepsilon^{-1}$, $\omega_\varepsilon = \omega_0 + \varepsilon\omega_1 + \varepsilon^2\omega_2$ and c_k, β are defined by (12), (13) with $\kappa = b/|a_0|$:

$$\begin{aligned} u_\varepsilon(t) &= a_0 \cos(\omega_\varepsilon t) + \varepsilon v_1(\omega_\varepsilon t) + \mathcal{O}(\varepsilon^2) \quad \text{with} \quad v_1(s) = \sum_{k=0}^{+\infty} d_k \cos(ks), \\ d_k &= \frac{-a|a_0|}{\omega_0^2(1-k^2)} c_k (a_0/|a_0|)^k, \quad \text{for } k \geq 2, \\ d_0 &= -\frac{a|a_0|}{\pi\omega_0^2} (\sin(\beta) - \kappa\beta), \quad d_1 = a_1 - \sum_{k \neq 1} d_k, \\ \omega_1 &= \frac{a}{2\pi\omega_0} \left(\frac{\sin(2\beta)}{2} + \beta - 2\kappa \sin(\beta) \right), \\ \omega_2 &= \frac{\omega_1 d_1}{a_0} - \frac{a}{\omega_0 \pi a_0} \int_0^\pi H(a_0 \cos(s) - b) v_1(s) \cos(s) ds. \end{aligned}$$

Notice that if $|a_0| < |b|$, there is no interaction with the weak unilateral spring. Thus the linearized solution is the exact solution.

Proof : There are two similar cases, a_0 positive or negative.

First case: assume $a_0 > 0$. With the previous notations, the method of strained coordinates yields the following equations:

$$\begin{aligned} v_0'' + v_0 &= 0, \quad v_0(0) = a_0, \quad \dot{v}_0(0) = 0 \quad \text{so } v_0(s) = a_0 \cos(s), \\ -\alpha_0(v_1'' + v_1) &= a(v_0 - b)_+ - \alpha_1 v_0 = aa_0(\cos(s) - b/a_0)_+ - \alpha_1 a_0 \cos(s), \\ -\alpha_0(r_\varepsilon'' + r_\varepsilon) &= aH(v_0 - b)v_1 - \alpha_2 v_0 - \alpha_1 v_1 + R_\varepsilon. \end{aligned}$$

Since $|\kappa| = |b/a_0| < 1$, the Fourier coefficient of $(\cos(s) - \kappa)_+ = \sum_{k=0}^{+\infty} c_k \cos(ks)$ are:

$$c_k = c_k[\kappa] = \frac{1}{\pi} \left(\frac{\sin((k+1)\beta)}{k+1} + \frac{\sin((k-1)\beta)}{k-1} - \frac{2\kappa \sin(k\beta)}{k} \right), \quad k \geq 2, \quad (12)$$

$$\beta = \beta[\kappa] = \arccos(\kappa) \in [0, \pi], \quad (13)$$

$$c_0 = c_0[\kappa] = \frac{\sin(\beta) - \kappa\beta}{\pi}, \quad c_1 = c_1[\kappa] = \frac{1}{\pi} \left(\frac{\sin(2\beta)}{2} + \beta - 2\kappa \sin(\beta) \right).$$

The non secular condition $\int_0^\pi (a(v_0 - b)_+ - \alpha_1 v_0) \cos(s) ds = 0$, yields $\alpha_1 = a \times a_0 \times c_1$. Now, we can compute $\omega_1 = \alpha_1/(2\omega_0)$ and the coefficient of the cosinus expansion of v_1 are $d_k = -\frac{aa_0}{\alpha_0} \frac{c_k}{1-k^2}$ for $k \neq 1$. The coefficient d_1 is then obtained with the initial data $v_1(0) = a_1$,

$\dot{v}_1(0) = 0$. α_2 , is obtained with the non secular condition for r_ε : $0 = \frac{1}{\pi} \int_0^\pi (aH(v_0 - b)v_1 - \alpha_2 v_0 - \alpha_1 v_1) \cos(s) ds$. This condition is rewritten as follow

$$\alpha_2 = \frac{2\omega_0\omega_1 d_1}{a_0} - \frac{2a}{\pi a_0} \int_0^\pi H(a_0 \cos(s) - b) v_1(s) \cos(s) ds, \quad \text{which gives } \omega_2 \text{ since } \omega_2 = \frac{\alpha_2 - \omega_1^2}{2\omega_0}.$$

Second case: when $a_0 = -|a_0| < 0$, by a similar way, we obtain a similar expansion, except that $(v_0(s) - b)_+ = |a_0|(-\cos(s) - \kappa)_+$. The Fourier expansion of $(-\cos(s) - \kappa)_+ = \sum_k \tilde{c}_k \cos(ks)$ is simply given by $\tilde{c}_k = (-1)^k c_k$ since $-\cos(s) = \cos(s + \pi)$. \square

When $|a_0| = |b|$, we have another asymptotic expansion only valid for shorter time when the unilateral spring slightly interacts with the mass. It is a new feature.

Proposition 2.3 (Grazing unilateral contact, shorter time validity)

Let b be a real number, $b \neq 0$, and consider, the solution u_ε of problem (11).

If $|a_0| = |b|$ and $|a_0 + \varepsilon a_1| > |b|$ then we have

$$u_\varepsilon(t) = (a_0 + \varepsilon a_1) \cos(\omega_0 t) + \mathcal{O}(\varepsilon^2), \text{ for } t \leq T_\varepsilon = \mathcal{O}\left(\frac{1}{\sqrt{\varepsilon}}\right).$$

Notice that if $|a_0 + \varepsilon a_1| \leq |b|$ then $u_\varepsilon(t) = (a_0 + \varepsilon a_1) \cos(\omega_0 t)$ for all time.

The method of strained coordinates gives us the *linear* approximation for $u_\varepsilon(t)$, with $s = t$, i.e. $\omega_\varepsilon = 1$. If $|u_\varepsilon(0)| < |b|$, the exact solution is the solution of the linear problem $\ddot{u} + \omega_0^2 u = 0$. Otherwise, if $|u_\varepsilon(0)| > |b|$, since, $|b|$ is the maximum of $v_0(s) = a_0 \cos(s)$, a new phenomenon appears, during each period, $|u_\varepsilon(t)| > |b|$ on interval of time of order $\sqrt{\varepsilon}$ instead of ε . Then T_ε is smaller than in Proposition 2.1.

To explain this phenomenon, we give precise estimates of the remainder when we expand $(v_0 + \varepsilon v_1 + \varepsilon^2 r_\varepsilon)_+$ in the next section, see Lemmas 3.1 and 3.2 below.

3 Expansion of $(u + \varepsilon v)_+$

We give some useful lemmas to perform asymptotic expansions and to estimate precisely the remainder for the piecewise linear map $u \rightarrow u_+ = \max(0, u)$.

Lemma 3.1 [Asymptotic expansion for $(u + \varepsilon v)_+$] Let be $T > 0$, u, v two real valued functions defined on $I = [0, T]$, and H be the Heaviside step function then

$$(u + \varepsilon v)_+ = (u)_+ + \varepsilon H(u)v + \varepsilon \chi_\varepsilon(u, v), \tag{14}$$

where $\chi_\varepsilon(u, v)$ is a non negative piecewise linear function and 1-Lipschitz with respect to v .

Let be $M > 0$, $J_\varepsilon = \{t \in I, |u(t)| \leq \varepsilon M\}$, $\mu_\varepsilon(T)$ the measure of the set J_ε .

If $|v(t)| \leq M$ for any $t \in I$ then

$$|\chi_\varepsilon(u, v)| \leq |v| \leq M, \quad \int_0^T |\chi_\varepsilon(u(t), v(t))| dt \leq M \mu_\varepsilon(T). \tag{15}$$

The point in inequality (15) is the remainder $\varepsilon \chi_\varepsilon$ is only of order ε in L^∞ but of order $\varepsilon \mu_\varepsilon$ in L^1 . In general, μ_ε is not better than a constant, take for instance $u \equiv 0$. Fortunately, it is proved below that μ_ε is often of order ε , and for some critical cases of order $\sqrt{\varepsilon}$.

Proof : Equality (14) defines χ_ε and can be rewritten as follow:

$$\chi_\varepsilon(u, v) = \frac{(u + \varepsilon v)_+ - u_+ - \varepsilon H(u)v}{\varepsilon}. \tag{16}$$

So, χ_ε is non negative since $u \rightarrow u_+$ is a convex function. We also easily see that the map $(u, v) \rightarrow \chi_\varepsilon(u, v)$ is piecewise linear, continuous except on the line $u = 0$ where χ_ε has a jump $-v$. This jump comes from the Heaviside step function. An explicit computations gives us the simple and useful formula: $0 \leq \varepsilon \chi_\varepsilon(u, v) = |u + \varepsilon v|H(|\varepsilon v| - |u + \varepsilon v|)$. We then have immediately $0 \leq \chi_\varepsilon(u, v) \leq |v|$. Let u be fixed, then $v \rightarrow \chi_\varepsilon(u, v)$ is one Lipschitz with respect to v . Furthermore, the support of χ_ε is included in J_ε , which concludes the proof. \square

Now we investigate the size of $\mu_\varepsilon(T)$, see [3, 11] for similar results about $\mu_\varepsilon(T)$ and other applications. With notations from Lemma 3.1 we have.

Lemma 3.2 (Order of $\mu_\varepsilon(T)$) *Let u be a smooth periodic function, M be a positive constant and $\mu_\varepsilon(T)$ the measure of the set $J_\varepsilon = \{t \in I, |u(t)| \leq \varepsilon M\}$. If u has only simple roots on $I = [0, T]$ then for some positive C , $\mu_\varepsilon(T) \leq C\varepsilon \times T$. More generally, if u has also double roots then $\mu_\varepsilon(T) \leq C\sqrt{\varepsilon} \times T$.*

The measure of such set J_ε implies many applications in averaging lemmas, for a characterization of μ_ε in a multidimensional framework see [3, 11].

Notice that any non zero solution $u(t)$ of any linear homogeneous second order ordinary differential equation has always simple zeros, thus for any constant c the map $t \rightarrow u(t) - c$ has at most double roots.

Proof : First assume u only has simple roots on a period $[0, P]$, and let $Z = \{t_0 \in [0, P], u(t_0) = 0\}$. The set Z is discrete since u has only simple roots which implies that roots of u are isolated. Thus Z is a finite subset of $[0, P]$: $Z = \{t_1, t_2, \dots, t_N\}$. We can choose an open neighborhood V_j of each t_j such that u is a diffeomorphism on V_j with derivative $|\dot{u}| > |\dot{u}(t_j)|/2$. On the compact set $K = [0, P] - \cup V_j$, u never vanishes, then

$\min_{t \in K} |u(t)| = \varepsilon_0 > 0$. Thus, we have for all $\varepsilon M < \varepsilon_0$, the length of J_ε in V_j is $|V_j \cap J_\varepsilon| \leq \frac{4\varepsilon M}{|\dot{u}(t_j)|}$.

As μ_ε is additive ($\mu_\varepsilon(P + t) = \mu_\varepsilon(P) + \mu_\varepsilon(t)$), its growth is linear. Thus, for the case with simple roots, we get $\mu_\varepsilon(T) = \mathcal{O}(\varepsilon T)$.

For the general case with double roots, on each small neighborhood of t_j : V_j , we have with a Taylor expansion, $|u(t_j + s)| \geq d_j |s|^l$, with $1 \leq l \leq 2$, $d_j > 0$, so, $|V_j \cap J_\varepsilon| \leq 2(\varepsilon M/d_j)^{1/l}$, then $\mu_\varepsilon(P) = \mathcal{O}(\sqrt{\varepsilon})$, which is enough to conclude the proof. \square

4 Several degrees of freedom

Now, we investigate the case with N masses. We use, the method of strained coordinates in three cases. We present the formal computations for each expansion. The mathematical proofs are postponed in the Appendix.

In subsection 4.1, the initial condition is near an eigenvector such that the approximate solution stays periodic. We give such initial condition near an eigenvector in subsection 4.2 to get an approximate nonlinear normal mode up to the order ε^2 . Finally, in subsection 4.4, all modes are excited. An extension of the method of strained coordinates is still possible but only at the first order with less accuracy.

The system studied is the following:

$M\ddot{\tilde{U}} + K\tilde{U} + \varepsilon(\tilde{A}\tilde{U} - B)_+ = 0$, where, for each component,

$$[(\tilde{A}\tilde{U} - B)_+]_k = \left(\sum_{j=1}^N \tilde{A}_{kj} u_j - b_k \right)_+, \quad M \text{ is a } N \times N \text{ mass matrix, } K \text{ is the stiffness matrix}$$

they are both symmetric definite positive. \tilde{A} and B are matrices which involve the rigidity of unilateral springs and their position with respect to the masses. For such a system, endowed with a natural convex energy for the linearized part, we can control the ε -Lipschitz nonlinear term for ε small enough up to large time. So for $\varepsilon \ll 1$ the solutions remain bounded for time of the order ε^{-1} .

We introduce the matrix Φ of generalized eigenvectors: $K\Phi = M\Phi\Lambda^2$ with Λ positive diagonal matrix of eigenvalues, $\Phi^T M \Phi = Id$, and set $\tilde{U} = \Phi U$, $A = \tilde{A}\Phi$, the system may be written:

$$\ddot{U} + \Lambda^2 U = -\varepsilon \Phi^T (AU - B)_+. \quad (17)$$

4.1 Initial condition near an eigenvector,

For the system (17), we take an initial condition near an eigenmode of the linearized system denoted for instance by index 1 .

$$\begin{cases} u_1^\varepsilon(0) = a_0 + \varepsilon a_1, & \dot{u}_1^\varepsilon(0) = 0, \\ u_k^\varepsilon(0) = 0 + \varepsilon a_k, & \dot{u}_k^\varepsilon(0) = 0, \quad \text{for } k \neq 1. \end{cases} \quad (18)$$

We impose a_2, \dots, a_N later to have a periodic approximation, but a_1 is a free constant as a_0 . It is a key point to apply the method of strained coordinates.

We use the same time $s = \omega_\varepsilon t$ for each component and the following notations.

$$\begin{aligned} \omega_\varepsilon &= \omega_0 + \varepsilon \omega_1 + \varepsilon^2 \omega_2, & \omega_0 &= \lambda_1, \\ (\omega_\varepsilon)^2 &= \alpha_0 + \varepsilon \alpha_1 + \varepsilon^2 \alpha_2 + \mathcal{O}(\varepsilon^3), & \alpha_0 &= \omega_0^2 = \lambda_1^2, \\ \alpha_1 &= 2\omega_0 \omega_1, & \alpha_2 &= \omega_1^2 + 2\omega_0 \omega_2, \\ u_j^\varepsilon(t) &= v_j^\varepsilon(s) = v_j^0(s) + \varepsilon v_j^1(s) + \varepsilon^2 r_j^\varepsilon(s), & j &= 1, \dots, N. \end{aligned}$$

Replacing, this ansatz in the System (17) we have in variable s ,

$$(\omega_\varepsilon)^2 (v_k^\varepsilon)'' + \lambda_k^2 v_k^\varepsilon = -\varepsilon \sum_{l=1}^N \Phi_{lk} \left(\sum_{j=1}^N A_{lj} v_j^\varepsilon(s) - b_j \right)_+,$$

and then performing the expansion for all $k \in \{1, \dots, N\}$,

$$\begin{aligned} L_k v_k^0 &= \alpha_0 (v_k^0)'' + \lambda_k^2 v_k^0 = 0, \\ -L_k v_k^1 &= \sum_{l=1}^N \Phi_{lk} \left(\sum_{j=1}^N A_{lj} v_j^0 - b_l \right)_+ + \alpha_1 (v_k^0)'', \\ -L_k r_k^\varepsilon &= \sum_{l=1}^N \Phi_{lk} H \left(\sum_{j=1}^N A_{lj} v_j^0 - b_l \right) \left(\sum_{j=1}^N A_{lj} v_j^1 \right) + \alpha_2 (v_k^0)'' + \alpha_1 (v_k^1)'' + R_k^\varepsilon. \end{aligned}$$

First we have $v_1^0(s) = a_0 \cos(s)$.

Equations for v_k^0 , for all $k \neq 1$, with zero initial data give us $v_k^0 = 0$.

In equation for v_1^1 , we remove the secular term in the right hand side,

$$-\alpha_0 ((v_1^1)'' + v_1^1) = \sum_{l=1}^N \Phi_{l1} (A_{l1} v_1^0 - b_l)_+ + \alpha_1 (v_1^0)'' = r.h.s. \quad v_1^1(0) = a_1, \quad (v_1^1)'(0) = 0.$$

The orthogonality of the *r.h.s* with $\cos(s)$ defines α_1 with (20). For instance, if $b_1 = 0$ and $A_{11} > 0$, we have as in Proposition 2.2, $2\alpha_1 = \sum_l \Phi_{l1} A_{l1}$ and $\omega_1 = \frac{\alpha_1}{2\lambda_1}$.

Now, α_1 is fixed, so v_1^1 is a well defined even 2π periodic function.

Then, for $k \neq 1$, v_k^1 is the unique 2π periodic solution of the simplified equation,

$$-L_k v_k^1 = \sum_{l=1}^N \Phi_{lk} (A_{l1} v_1^0 - b_l)_+. \quad (19)$$

Such a function exists and is unique if $\lambda_k \notin \lambda_1 \mathbb{Z}$. Furthermore v_k^1 is an even function as the right hand side of equation (19). Then a_k is given by $v_k^1(0)$ and $(v_k^1)'(0) = 0$ for all $k \neq 1$. The term r_1^ε , with null initial data, has a simplified equation since $v_k^0 \equiv 0$ for all $k \neq 1$,

$$-L_1 r_1^\varepsilon = \sum_{l=1}^N \Phi_{l1} H (A_{l1} v_1^0 - b_l) \left(\sum_{j=1}^N A_{lj} v_j^1 \right) + \alpha_2 (v_1^0)'' + \alpha_1 (v_1^1)'' + R_1^\varepsilon.$$

Now we can compute numerically α_2 to avoid secular term in the right hand side, R_1^ε excepted, with the following condition,

$$0 = \int_0^\pi \left[\sum_{l=1}^N \Phi_{l1} H(A_{l1} v_1^0 - b_l) \left(\sum_{l=1}^N A_{l1} v_l^1 \right) + \alpha_2 (v_1^0)'' + \alpha_1 (v_1^1)'' \right] \cdot \cos(s) ds.$$

Rewriting this condition, we obtain an equation for α_2 in Theorem 4.1 below.

For each $k \neq 1$, $\lambda_k \notin \lambda_1 \mathbb{Z}$, so r_k^ε stays bounded for large time. Indeed there is no resonance of the order one at the first order in equation satisfied by r_k^ε . This is the technical part of the proof to validate rigorously and to find the time of validity of such asymptotic expansion. The complete proof to bound $(r_1^\varepsilon, \dots, r_N^\varepsilon)$ for large time is to be found in the Appendix, subsection 6.2. Now we state our result with previous notations.

Theorem 4.1 *The Lindstedt-Poincaré expansion is valid on $(0, T_\varepsilon)$, with $T_\varepsilon \rightarrow +\infty$ when $\varepsilon \rightarrow 0$ under assumption $\{\lambda_2, \dots, \lambda_N\} \cap \lambda_1 \mathbb{Z} = \emptyset$:*

$$\begin{cases} u_1^\varepsilon(t) &= v_1^0(\omega_\varepsilon t) + \varepsilon v_1^1(\omega_\varepsilon t) + \mathcal{O}(\varepsilon^2), \\ u_k^\varepsilon(t) &= 0 + \varepsilon v_k^1(\omega_\varepsilon t) + \mathcal{O}(\varepsilon^2), \quad k \neq 1, \end{cases}$$

where $v_1^0(\cdot)$, α_1 , ω_1 , $v_1^1(\cdot)$, $v_k^1(\cdot)$ and a_k for $k \neq 1$, α_2 , ω_2 are successively defined as follows:

$$\begin{aligned} v_1^0(s) &= a_0 \cos(s), \\ \alpha_1 &= \frac{2}{a_0 \pi} \int_0^\pi \sum \Phi_{l1} (A_{l1} v_1^0(s) - b_l)_+ \cos(s) ds, \quad \text{then } \omega_1 = \frac{\alpha_1}{2\omega_0}, \\ -L_1 v_1^1 &= (A_{11} v_1^0 - b_1)_+ + \alpha_1 (v_1^0)'', \quad v_1^1(0) = a_1, \quad (v_1^1)'(0) = 0, \\ v_k^1 &\text{ be the unique } 2\pi \text{ periodic solution of (19) and } a_k := v_k^1(0), \text{ for } k \neq 1, \\ \alpha_2 &= \left(\frac{2}{a_0 \pi} \sum_{l=1}^N \Phi_{l1} \int_0^\pi H_{l1}(s) \cos(s) ds \right) + \alpha_1 \int_0^\pi (v_1^1)'' \cos(s) ds, \\ &\text{with } H_{l1}(s) = H(A_{l1} v_1^0(s) - b_l) \left(A_{l1} v_j^1(s) + \sum_{k \neq 1}^N A_{1k} v_k^1(s) \right), \\ \omega_\varepsilon &= \omega_0 + \varepsilon \omega_1 + \varepsilon^2 \omega_2, \quad \text{where } \omega_2 = \frac{\alpha_2 - \omega_1^2}{2\omega_0} \end{aligned}$$

and L_k be the differential operator $\lambda_1^2 \frac{d^2}{ds^2} + \lambda_k^2$.

Furthermore, if $(A_{j1} v_1^0 - b_j)$ has got only simple roots for all $j = 1, \dots, N$, then $T_\varepsilon = O(\varepsilon^{-1})$, else $T_\varepsilon = O(\varepsilon^{-1/2})$.

In the theorem, v_k^1 is classically obtained by a Fourier series. We give some indications of its initial condition in the next subsection 4.2.

4.2 Approximate non linear normal mode

The special initial conditions of the previous subsection can be explicitated in order to find a solution where all the components are in phase at the same frequency. Indeed we shall obtain an approximate curve of initial conditions for which the solution is periodic up to the order ε for a time of the order ε^{-1} or $\varepsilon^{-1/2}$: this is up to the second order approximation a non linear normal mode in the sense of Rosenberg [23]; see [10] for a computation of non linear normal mode with unilateral contact and [15] for a synthesis on non linear normal modes.

Corollary 4.1 (Explicit initial condition for the approximate NNM)

Let $a_0 \neq 0$ be fixed, $k \neq 1$, $A_{j1} \neq 0$, $\kappa_j = \frac{b_j}{A_{j1} a_0}$, and $c_l[\kappa]$ defined by formula (12). a_k from (18) are computed explicitly in the following cases:

1. if $b_j = 0$ for $j = 1, \dots, N$, then

$$a_k = \sum_{j=1}^N \Phi_{jk} \left(\frac{|A_{j1}a_0|}{2(\lambda_1^2 - \lambda_k^2)} - \frac{|A_{j1}a_0|}{\lambda_k^2 \pi} + \frac{|A_{j1}a_0|}{\pi} \sum_{l=1}^{+\infty} \frac{(-1)^l}{(4l^2 \lambda_1^2 - \lambda_k^2)(4l^2 - 1)} \right) \quad (20)$$

2. if $0 < b_j$, $|\kappa_j| < 1$, $a_0 A_{j1} < 0$ for all j then

$$a_k = - \sum_{j=1}^N \Phi_{jk} |a_0 A_{j1}| \left[\sum_{l=1}^{+\infty} \frac{(-1)^l c_l[-\kappa_j]}{l^2 \lambda_1^2 - \lambda_k^2} \right] \quad (21)$$

3. if $0 < |\kappa_j| < 1$, and $a_0 A_{j1} > 0$ for all j then

$$a_k = \sum_{j=1}^N \Phi_{jk} a_0 A_{j1} \left[\sum_{l=1}^{+\infty} \frac{c_l[\kappa_j]}{l^2 \lambda_1^2 - \lambda_k^2} \right] \quad (22)$$

Thanks to Theorem 4.1, such initial data given by $(a_k)_k$ determine the approximate NNM. Notice that there is no condition on a_1 . The other numerous cases may solved similarly.

Proof : The principle of the proof is simple: v_k^1 is the periodic solution of the differential equation (19) and $a_k = v_k^1(0)$ has to be determined in order that the function v_k^1 has an angular frequency equal to one. Solution of (19) is $v_k^1 = A \cos\left(\frac{\lambda_k}{\lambda_1} s\right) + B \sin\left(\frac{\lambda_k}{\lambda_1} s\right) + w_k^1(s)$, where w_k^1 is a particular solution associated to the right hand side which is of angular frequency equal to 1. Note that $B = 0$ as the initial velocity is null. We can get a function of angular frequency equal to 1 by setting $a_k = w_k^1(0)$. This condition may be written explicitly with formulas (12) which provides the expansion in Fourier series; formulas (20), (21), (22) are then derived easily successively.

1. If $b_k = 0$, $k \neq 1$, (19) is written: $-L_k v_k^1 = \sum_{j=1}^N \Phi_{jk} \left(A_{j1} a_0 \frac{\cos(s)}{2} + |A_{j1} a_0| \frac{|\cos(s)|}{2} \right)$. We use formula (8) to get the particular solution w_k^1 and then formula (20):
 $w_k^1(s) = \sum_{j=1}^N \Phi_{jk} \left(A_{j1} a_0 \frac{\cos(s)}{2(\lambda_1^2 - \lambda_k^2)} - \frac{|A_{j1} a_0|}{\lambda_k^2 \pi} + \frac{2|A_{j1} a_0|}{\pi} \sum_{l=1}^{+\infty} \frac{(-1)^l \cos(2ls)}{4l^2 \lambda_1^2 - \lambda_k^2} \right)$.
2. For the second case, (19) is written: $-L_k v_k^1 = - \sum_{j=1}^N \Phi_{jk} A_{j1} a_0 (-\cos(s) + \kappa_j)_+$. We use (12) to obtain $w_k^1(s) = - \sum_{j=1}^N \Phi_{jk} |A_{j1} a_0| \left[\sum_{l=1}^{+\infty} \frac{c_{jl} \cos(ls)}{l^2 \lambda_1^2 - \lambda_k^2} \right]$ where $c_{jl} = c_l[-\kappa_j]$.
3. For the third case (19) is written: $-L_k v_k^1 = \sum_{j=1}^N \Phi_{jk} A_{j1} a_0 (\cos(s) - \kappa_j)_+$ from which $w_j^1(s) = \sum_{j=1}^N \Phi_{jk} a_0 A_{j1} \sum_{l=1}^{+\infty} \frac{c_{jl} \cos(ls)}{l^2 \lambda_1^2 - \lambda_k^2}$ where $c_{jl} = c_l[\kappa_j]$.

□

4.3 Numerical results of NNM

4.3.1 Using numerically Lindstedt-Poincaré expansions

Here we use the previous results and compute numerically a solution of system (17) using the approximation (20): $u^\varepsilon(t) = v^0(\omega_\varepsilon t) + \varepsilon v^1(\omega_\varepsilon t) + O(\varepsilon^2)$ with the initial conditions of theorem 4.1. The first term v^0 is easy to obtain; for the second term v^1 an explicit formula is in principle possible using Fourier series such as for one degree of freedom but it is cumbersome so we choose to compute v^1 by solving numerically (19) with a step by step algorithm; we use as a black-box the routine ODE of SCILAB [26] to solve equations of theorem 4.1 after computing by numerical integration α_1 . We show numerical results for a system of the type:

$$M \ddot{X} + K X + \varepsilon F(X) = 0 \quad (23)$$

we still denote λ_j^2 the eigenvalues and ϕ_j the eigenvectors of the usual generalized eigenvalue problem $K\phi_j - \lambda_j^2 M\phi_j = 0$ with ${}^t\phi_k M\phi_j = \delta_{kj}$. We set: $X = \sum_j u_j \phi_j = \underline{\underline{\phi}} \underline{u}$. In this basis, the system may be written componentwise: $\ddot{u}_k + \lambda_k^2 u_k + {}^t\phi_k \varepsilon F(\underline{\underline{\phi}} \underline{u}) = 0$.

We illustrate a simple local non linearity in the system (23), with the following nonlinearity

$$F(X) = (X_1 - \beta_1) M \phi_1 = \left(\sum_j u_j \phi_{j1} - \beta_1 \right)_+ M \phi_1.$$

The system (23), written in the basis of the eigenvectors, simply becomes:

$$\ddot{u}_1 + \lambda_1^2 u_1 + \varepsilon \left(\sum_j \phi_{j1} u_j - \beta_1 \right)_+ = 0, \quad \text{and for } k \neq 1 \quad \ddot{u}_k + \lambda_k^2 u_k = 0.$$

We find in figure 3 a numerical example of the Lindsted-Poincaré approximation for 5 degrees of freedom with $\varepsilon = 0.063$ and with an energy of 0.03002. The left figure shows the 5 components of the solution with respect to time; the right figure, the solution in the configuration space: abscissa component 1 and ordinate components 2 to 5; these lines are rectilinear like in the linear case but the non symmetry may be particularly noticed on the smallest component which corresponds to the mode where the non linearity is active.

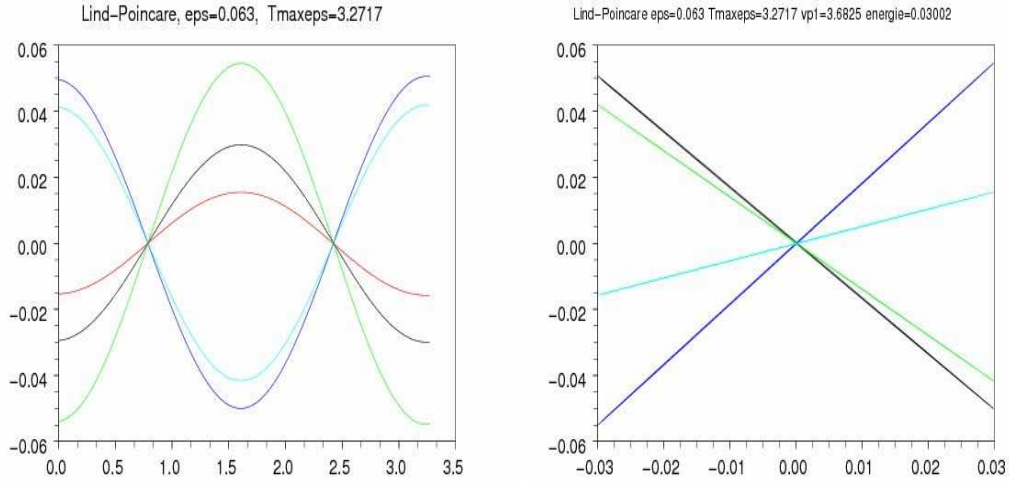


Figure 3: Lindstedt-Poincaré, energy=0.03, 5 dof; left: components with respect to time; right: in configuration space

4.3.2 Using optimization routines

We also find in figure 4 a numerical example with the same energy of 0.03002; it is computed with a purely numerical method described below. We notice that the solution is quite similar in both cases.

The numerical expansions of the previous subsection gives valid results for ε small enough; in many practical cases such as [8], ε may be quite large; in this case, it is natural to try to solve numerically the following equations with respect to the period T and the initial condition $X(0)$.

$$X(0) = X(T), \quad \dot{X}(0) = \dot{X}(T) \quad E(X) = e$$

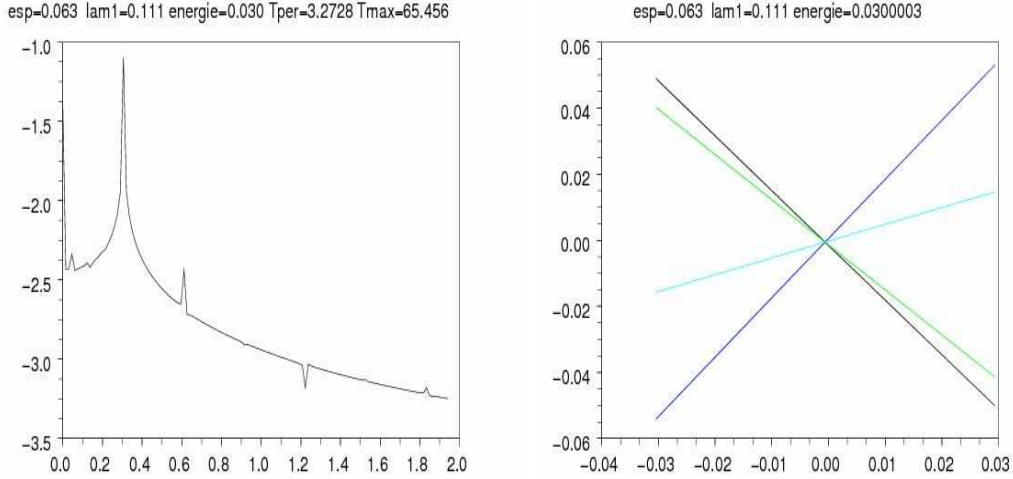


Figure 4: Continuation and Powell hybrid, energy=0.03, 5 dof; left:Fourier transform ; right: in configuration space

In other words, we look for a periodic solution of prescribed energy; this last condition is to ensure to obtain an isolated local solution: the previous expansions show that in general, the period of the solution depends on its amplitude prescribed here by its energy. To try to solve these equations with a black-box routine for nonlinear equations such as “fsolve” routine of SCILAB [26](an implementation of a modification of Powell hybrid method which goes back to [21]) in general fails to converge. Even in case of convergence, we should address the question of link of this solution with normal modes of the linearized system.

So we prescribe that $e = c\varepsilon$ and for $\varepsilon \rightarrow 0$, the solution is tangent to a linear eigenmode. In the case where all the eigenvalues of the linear system are simple, we define N (the number of degrees of freedom) non linear normal modes for which, it is reasonable to conjecture that they correspond to isolated solutions of (24) at least for small ε if we enforce for example $\dot{X}(0) = 0$.

Algorithm This definition of the solution of (24) tangent to a prescribed linear eigenmode provides a simple way of numerical approximation: using a continuation method coupled with a routine for solving a system of non linear equations. Define:

$$\mathcal{F}(\varepsilon, X_0, X_1, T) = [X(T) - X_0, \dot{X}(T) - X_1, E(X) - c\varepsilon],$$

where X is a numerical solution of the differential system $\begin{cases} M\ddot{X} + KX + \varepsilon F(X) = 0 \\ X(0) = X_0, \quad \dot{X}(0) = X_1 \end{cases}$

choose a small initial value of ε and an increment δ

choose an eigenvector ϕ_j

$$X_0(0) = A_\varepsilon \phi_j, \quad X_1(0) = B_\varepsilon \lambda_j \phi_j$$

$$\text{with } E(X_0(0), X_1(0)) = c\varepsilon$$

for iter=1:itermax

$$\varepsilon = \varepsilon + \delta$$

with $(X_0(\text{iter}-1), X_1(\text{iter}-1))$ as a first approximation, solve for $(X_0(\text{iter}), X_1(\text{iter}))$,

$$\mathcal{F}(\varepsilon, X_0, X_1, T) = 0$$

if $\|\mathcal{F}(\varepsilon, X_0, X_1, T)\| > \text{tolerance}$ **then** $\varepsilon = \varepsilon - \delta, \quad \delta = \delta/2$

```

endif
endfor

```

This algorithm may be improved by using not only the solution associated to the previous value of ε to solve $\mathcal{F}(\varepsilon, X_0, X_1, T) = 0$ but also the derivative of the solution with respect to X_0, X_1, T .

Numerical results These results are obtained by solving the differential equation with a step by step numerical approximation of the routine *ode* of Scilab without prescribing the algorithm. As we are looking for a periodic solution, this numerical approximation may be certainly improved in precision and computing time by using an harmonic balance algorithm. In figure 5, the same example with 5 degrees of freedom and energy equal 0.123 is displayed.

On the left of figure 5 we find the decimal logarithm of the absolute value of the Fourier transform of the solution; the Fourier transform is computed with the fast Fourier transform with the routine *fft* of Scilab; we notice the frequency zero due to the non symmetry of the solution and multiples of the basic frequency; no other frequency appears; on the right the five components are plotted with respect to time; we still notice the non symmetry.

In figure 6 we find results with 20 degrees of freedom, $\varepsilon = 0.272$ and energy of 0.129; the NNM is computed by starting with an eigenvector associated to the largest eigenvalue . We see on the left in the configuration space that the components are in phase and on the right, the Fourier transform shows zero frequencies and multiple of the basic frequency.

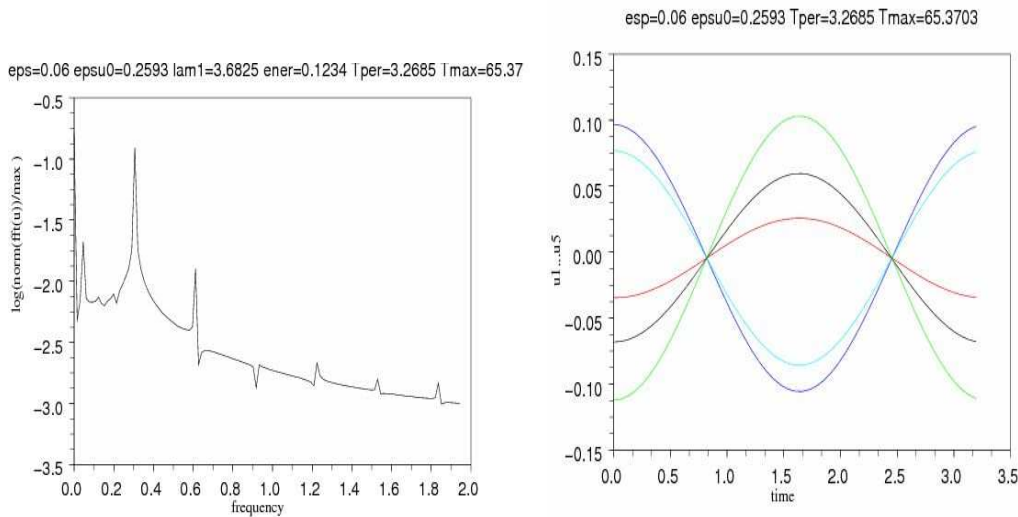


Figure 5: energy=0.123, 5 dof; left:Fourier transform ; right: with respect to time

In figure 7 the energy is 0.29 and the NNM is computed by starting with an eigenvector associated to the smallest eigenvalue; we notice on the left, the solution in the configuration space: at zero each dof has a discontinuity in slope which is clear.

In figure 8, the shape of the NNM is displayed on the left for the NNM starting from the eigenvector associated to the smallest eigenvalue and on the right for the NNM starting from the second smallest eigenvalue. We notice that the shape is quite similar to the shape of the linear mode.

4.4 First order asymptotic expansion

In this subsection, we do not particularize the initial data on one eigenmode. We adapt the method of strained coordinates when all modes are excited. We loose one order of accuracy

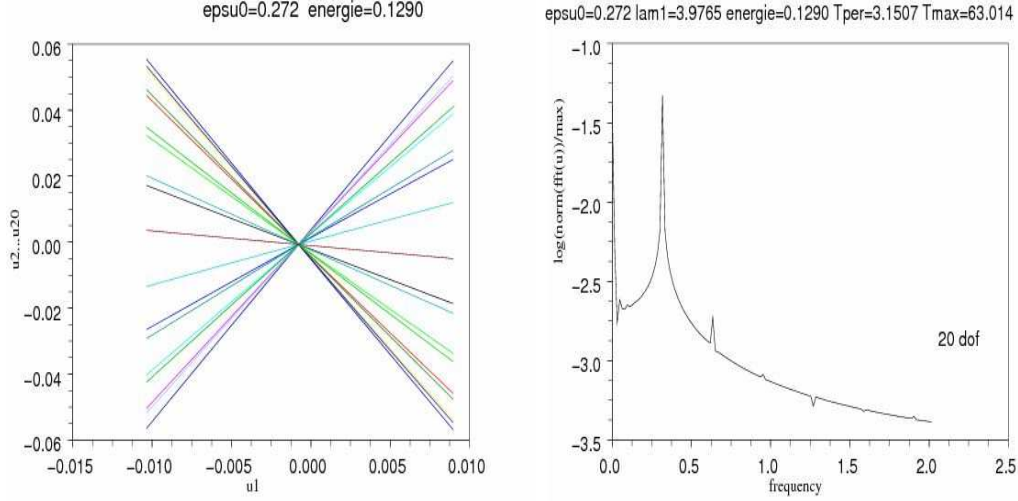


Figure 6: energy=0.129, 20 dof; left:in configuration space; right: Fourier transform

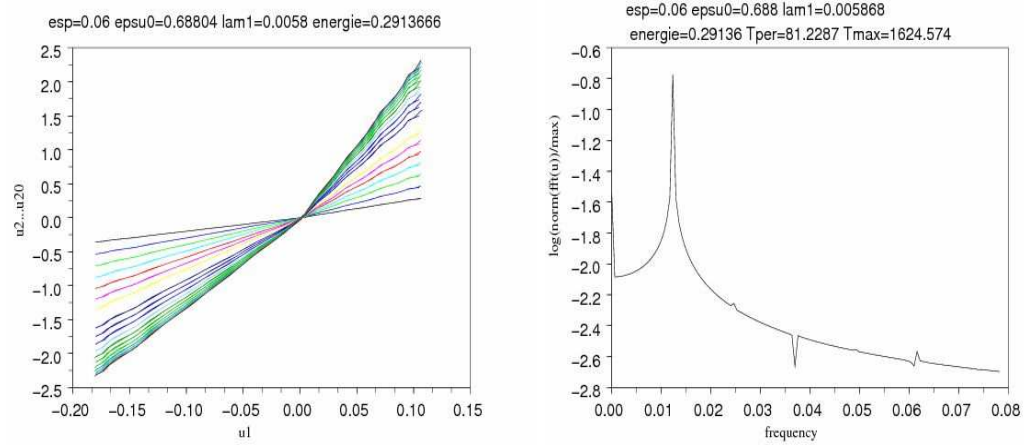


Figure 7: energy=0.29, 5 dof; left: configuration space; right:fft

compared to previous results since each mode does not stay periodic and becomes almost-periodic. We assume $\Phi = Id$ to simplify slightly the presentation. More precisely, the method of strained coordinates is used for each normal component, with the following initial data

$$u_k^\varepsilon(0) = a_k, \quad \dot{u}_k^\varepsilon(0) = 0, \quad k = 1, \dots, N.$$

Let us define N new times $s_k = \lambda_k^\varepsilon t$ and the following ansatz,

$$\begin{aligned} \lambda_k^\varepsilon &= \lambda_k^0 + \varepsilon \lambda_k^1, & \lambda_k^0 &= \lambda_k, \\ u_k^\varepsilon(t) &= v_k^\varepsilon(\lambda_k^\varepsilon t) = v_k^\varepsilon(s_k) = v_k^0(s_k) + \varepsilon r_k^\varepsilon(s_k). \end{aligned}$$

The function v_k^0 are easily obtained by the linearized equation. Indeed, the only measured nonlinear effect for large time is given by $(\lambda_k^1)_{k=1}^N$. To obtain these N unknowns, we replace

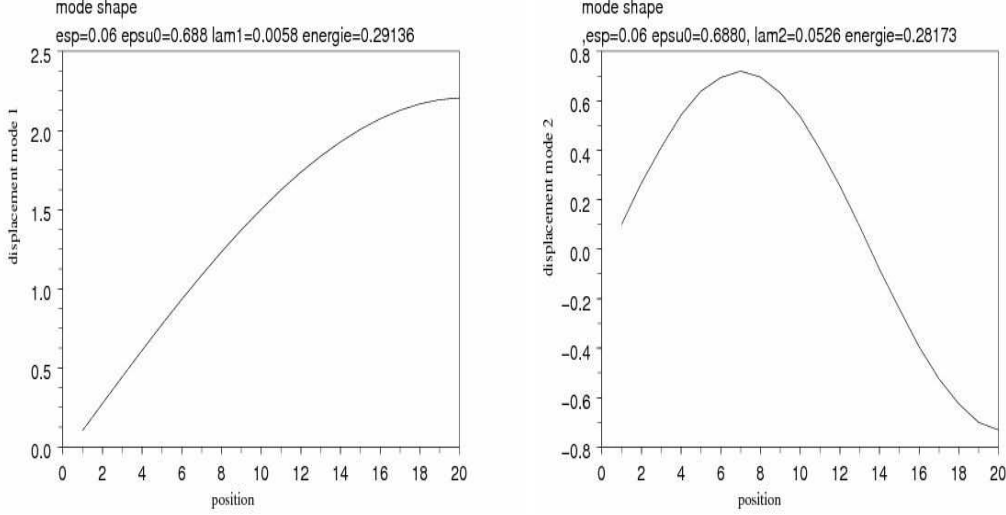


Figure 8: 20 dof; left:energy 0.29 mode 1; right: energy 0.28, mode 2

the previous ansatz in the system (17),

$$(\lambda_k^\varepsilon)^2 (v_k^\varepsilon)''(s_k) + \lambda_k^2 v_k^\varepsilon(s_k) = -\varepsilon \left(\sum_{j=1}^N a_{kj} v_j^\varepsilon \left(\frac{\lambda_j^\varepsilon}{\lambda_k^\varepsilon} s_k \right) - b_k \right)_+.$$

The right hand side is written in variable s_k instead of s_j . Performing the expansion with respect to epsilon powers yields

$$\begin{aligned} L_k v_k^0 &= (\lambda_k^0)^2 (v_k^0)''(s_k) + \lambda_k^2 v_k^0(s_k) = 0, \\ -L_k r_k^\varepsilon(s_k) &= \left(\sum_{j=1}^N a_{kj} v_j^0 \left(\frac{\lambda_j^0}{\lambda_k^0} s_k \right) - b_k \right)_+ + 2\lambda_k \lambda_k^1 (v_k^0)'' + R_k^\varepsilon. \end{aligned} \quad (24)$$

Noting that replacing $v_j^\varepsilon(s_j)$ by $v_j^0 \left(\frac{\lambda_j^0}{\lambda_k^0} s_k \right)$ in (24) implies a secular term of the order εt , since $s_j = \frac{\lambda_j^0}{\lambda_k^0} s_k + \mathcal{O}(\varepsilon t)$, the functions v_j^0 are smooth and the map $S \rightarrow S_+$ is one-Lipschitz. These new kind of errors $\mathcal{O}(\varepsilon t)$ are contained in the remainder of each right hand side:

$$R_k^\varepsilon(t) = \mathcal{O}(\varepsilon t) + \mathcal{O}(\varepsilon |r^\varepsilon|), \quad |r^\varepsilon| = \sqrt{\sum_{k=1}^N (r_k^\varepsilon)^2}. \quad (25)$$

If $b_k = 0$, we identify the secular term with the Lemma 6.5 below and the relation $S_+ = S/2 + |S|/2$. Then, we remove the resonant term in the source term for the remainder r_k^ε , which gives us $\lambda_k^1 = \frac{a_{kk}}{4\lambda_k}$.

If $b_k \neq 0$, we compute λ_k^1 numerically with the following orthogonality condition to $\cos(s)$ written in the framework of almost periodic functions,

$$0 = \lim_{T \rightarrow \infty} \frac{1}{T} \int_0^T \left[\left(\sum_{j=1}^N a_{kj} v_j^0 \left(\frac{\lambda_j^0}{\lambda_k^0} s_k \right) - b_k \right)_+ + 2\lambda_k \lambda_k^1 (v_k^0)'' \right] \cdot \cos(s) ds.$$

The accuracy of the asymptotic expansion depends on the behavior of the solution $\phi = (\phi_1, \dots, \phi_N)$ of the N following decoupled linear equations with right coefficients λ_k^1 to avoid resonance

$$-L_k \phi_k(s_k) = \left(\sum_{j=1}^N a_{kj} v_j^0 \left(\frac{\lambda_j^0}{\lambda_k^0} s_k \right) - b_k \right)_+ + 2\lambda_k \lambda_k^1 (v_k^0)'''. \quad (26)$$

Furthermore each function r_k^ε depends on all times s_j , $j = 1, \dots, N$ and becomes almost-periodic, i.e. $r_k^\varepsilon = r_k^\varepsilon(s_1, \dots, s_N)$. Thus the method of strained coordinates, only working for periodic functions, fails to be continued.

Nevertheless, we obtain the following result proved in the Appendix.

Theorem 4.2 (All modes)

If $\lambda_1, \dots, \lambda_N$ are \mathbb{Z} independent, then, for any $T_\varepsilon = o(\varepsilon^{-1})$, i.e. such that

$$\lim_{\varepsilon \rightarrow 0} T_\varepsilon = +\infty, \quad \text{and} \quad \lim_{\varepsilon \rightarrow 0} \varepsilon \times T_\varepsilon = 0,$$

we have for all $k = 1, \dots, N$,

$$\lim_{\varepsilon \rightarrow 0} \|u_k^\varepsilon(t) - v_k^0(\lambda_k^\varepsilon t)\|_{W^{2,\infty}(0,T_\varepsilon)} = 0$$

where $\lambda_k^\varepsilon = \lambda_k + \varepsilon \lambda_k^1$, $v_k^0(s) = a_k \cos(s)$, and λ_k^1 is defined by:

$$\lambda_k^1 = \frac{1}{2\lambda_k a_0} \lim_{T \rightarrow +\infty} \frac{1}{T} \int_0^T \left(\sum_{j=1}^N a_{kj} v_j^0 \left(\frac{\lambda_j^0}{\lambda_k^0} s_k \right) - b_k \right)_+ \cos(s) ds.$$

Furthermore, if $b_k = 0$, the previous integral yields: $\lambda_k^1 = \frac{a_{kk}}{4\lambda_k}$.

Notice that accuracy and large time are weaker than these obtained in Theorem 4.1. It is due to the inevitable accumulation of the spectrum near the resonance and the various times using in the expansion. On the other side we have the following direct improvement from the Theorem 4.1:

Remark 4.1 (Polarisation) If only one mode are excited, for instance the number 1, i.e. $a_1 \neq 0$, $a_k = 0$ for all $k \neq 1$, then we have the estimate for all $t \in [0, \varepsilon^{-1}]$:

$$\begin{aligned} u_1^\varepsilon(t) &= v_1^0(\lambda_1^\varepsilon t) + \mathcal{O}(\varepsilon). \\ u_k^\varepsilon(t) &= 0 + \mathcal{O}(\varepsilon) \quad \text{for all } k \neq 1. \end{aligned}$$

5 Expansions with even periodic functions

Fourier expansion involving only cosines are used throughout this paper. There is never sinus. In this short section we explain why it is simple to work with even periodic functions and we give some hints to work with more general initial data.

First, we want to work only with co-sinus to avoid two secular terms. If we return to equation (6): $-\alpha_0(v_1'' + v_1) = (v_0)_+ + \alpha_1 v_0''$. A priori, we have two secular terms in the right hand side, one with $\cos(s)$ and another with $\sin(s)$. Only one parameter α_1 seems not enough to cancel out all secular terms.

Otherwise, if $v_0 \in \mathbb{R}$, u, S are 2π periodic even functions, $g \in C^0(\mathbb{R}, \mathbb{R})$ such that

$$0 = \int_0^{2\pi} e^{is} (S(s) + g(u(s))) ds$$

$$v'' + v = S(s) + g(u), \quad v(0) = v_0, v'(0) = 0,$$

is necessarily a 2π periodic even function. Since we only work with 2π periodic even functions we have always at most one secular term proportional to $\cos(s)$.

Now we investigate the case involving not necessarily even periodic functions. In general, $\dot{u}_0^\varepsilon \neq 0$ and u_ε is the solution of

$$\ddot{u}_\varepsilon + u_\varepsilon + \varepsilon f(u_\varepsilon) = 0, \quad u_\varepsilon(0) = u_0^\varepsilon, \quad \dot{u}_\varepsilon(0) = \dot{u}_0^\varepsilon.$$

By the energy $2E = \dot{u}^2 + u^2 + \varepsilon F(u)$, where $F' = 2f$ and $F(0) = 0$, we know that u_ε is periodic for ε small enough, for instance with an implicit function theorem see [29] also valid for Lipschitz function [4] in our case. Denote by τ_ε the first time such that $\dot{u}_\varepsilon(t) = 0$. Such time exists thanks to the periodicity of u_ε . Now, let U_ε defined by $U_\varepsilon(t) = u_\varepsilon(t + \tau_\varepsilon)$. U_ε is the solution of

$$\ddot{U}_\varepsilon + U_\varepsilon + \varepsilon f(U_\varepsilon) = 0, \quad U_\varepsilon(0) = U_0^\varepsilon = u_\varepsilon(\tau_\varepsilon), \quad \dot{U}_\varepsilon(0) = 0.$$

The initial data U_0^ε depends on the initial position and initial velocity of u_ε through the energy, $(U_0^\varepsilon)^2 + \varepsilon F(U_0^\varepsilon) = (u_0^\varepsilon)^2 + (\dot{u}_0^\varepsilon)^2 + \varepsilon F(u_0^\varepsilon)$. For instance, if u_0^ε and \dot{u}_0^ε are positive then U_0^ε is positive and

$$U_0^\varepsilon = \sqrt{(u_0^\varepsilon)^2 + (\dot{u}_0^\varepsilon)^2 + \varepsilon(F(u_0^\varepsilon) - F(\sqrt{(u_0^\varepsilon)^2 + (\dot{u}_0^\varepsilon)^2}))} + \mathcal{O}(\varepsilon^2).$$

We can apply the method of strained coordinates for U_ε only with even periodic functions: $U_\varepsilon(t) = v_0(\omega_\varepsilon t) + \varepsilon v_1(\omega_\varepsilon t) + \mathcal{O}(\varepsilon^2)$. The expansion obtained for u_ε by U_ε , with $\phi_\varepsilon = -\omega_\varepsilon \tau_\varepsilon$ is:

$$u_\varepsilon(t) = v_0(\omega_\varepsilon t + \phi_\varepsilon) + \varepsilon v_1(\omega_\varepsilon t + \phi_\varepsilon) + \mathcal{O}(\varepsilon^2),$$

which is a good ansatz in general for u_ε , where v_0 and v_1 are even 2π -periodic functions. The method of strained coordinates becomes to find the following unknowns $\phi_0, \omega_1, \phi_1, \omega_2, \phi_2$ such that

$$\begin{aligned} \omega_\varepsilon &= \omega_0 + \varepsilon \omega_1 + \varepsilon^2 \omega_2 + \dots, \\ \phi_\varepsilon &= \phi_0 + \varepsilon \phi_1 + \varepsilon^2 \phi_2 + \dots. \end{aligned}$$

Indeed, we have two parameters to cancel out two secular terms at each step. If one is only interested by the nonlinear frequency shift, it is simpler to work only with cosines.

Otherwise, if f is an odd function, we can work only with odd periodic function. It is often the case in literature when occurs a cubic non-linearity. See for instance [17, 18, 19] for the Duffing equation, the Rayleigh equation or the Korteweg-de Vries equation.

6 Appendix: technical proofs

We give some useful results about energy estimates and almost periodic functions in subsection 6.1. Next we complete the proofs for each previous asymptotic expansions in subsection 6.2. The point is to bound the remainder for large time in each expansion.

6.1 Useful lemmas

The following Lemma is useful to prove an expansion for large time with non smooth non-linearity.

Lemma 6.3 [Bounds for large time]

Let w_ε be a solution of

$$\begin{cases} w_\varepsilon'' + w_\varepsilon = S(s) + f_\varepsilon(s) + \varepsilon g_\varepsilon(s, w_\varepsilon), \\ w_\varepsilon(0) = 0, \quad w_\varepsilon'(0) = 0. \end{cases} \quad (27)$$

If source terms satisfy the following conditions where $M > 0, C > 0$ are fixed constants :

1. $S(s)$ is a 2π -periodic function orthogonal to $e^{\pm is}$, and $|S(s)| \leq M$ for all s ,

2. $|f_\varepsilon| \leq M$ and for all T , $\int_0^T |f_\varepsilon(s)| ds \leq C\varepsilon T$ (resp. $C\sqrt{\varepsilon}T$),

3. for all $R > 0$: $M_R = \sup_{\varepsilon \in (0,1), s > 0, R > |u|} |g_\varepsilon(s, u)| < \infty$,

that is to say that $g_\varepsilon(s, u)$ is locally bounded with respect to u for $\varepsilon \in (0, 1)$ and $s \in (0, +\infty)$,

then, there exists $\varepsilon_0 > 0$ and $\gamma > 0$ such that, for $0 < \varepsilon < \varepsilon_0$, w_ε is uniformly bounded in $W^{2,\infty}(0, T_\varepsilon)$, where $T_\varepsilon = \frac{\gamma}{\varepsilon}$ (resp. $\frac{\gamma}{\sqrt{\varepsilon}}$).

Notice that f_ε and g_ε are not necessarily continuous. Indeed this a case for our asymptotic expansion, see Lemme 3.1 and its applications throughout the paper. But in previous sections the right hand side is globally continuous, i.e. $S + f_\varepsilon + \varepsilon g_\varepsilon(\cdot, w_\varepsilon)$ is continuous, so, in this case, w_ε is C^2 .

Proof of the Lemma 6.3: First we remove the non resonant periodic source term which is independent of ε . Second, we get L^∞ bound for w_ε and w'_ε with an energy estimate. Third, with equation (27), we get an uniform estimate for w''_ε in $L^\infty(0, T_\varepsilon)$ and the $W^{2,\infty}$ regularity.

Step 1: remove S

It suffices to write $w_\varepsilon = w_1 + w_2^\varepsilon$ where w_1 solves the linear problem:

$$w_1'' + w_1 = S(s), \quad w_1(0) = 0, w_1'(0) = 0. \quad (28)$$

w_1 and w_1' are uniformly bounded in $L^\infty(0, +\infty)$ since there is no resonance.

More precisely, $w_1 = F(s) + A \cos(s) + B \sin(s)$, where F is 2π periodic. F is obtained by Fourier expansion without harmonic $n = \pm 1$ since S is not resonant:

$$F(s) = \sum_{n \neq \pm 1} \frac{c_n}{1 - n^2} e^{ins} \quad \text{with} \quad S(s) = \sum_{n \neq \pm 1} c_n e^{ins}.$$

F is uniformly bounded, with Cauchy-Schwartz inequality set $C_0^2 = \sum_{n \neq \pm 1} |n^2 - 1|^{-2}$, we

obtain: $\|F\|_{L^\infty} \leq \sum_{n \neq \pm 1} \frac{|c_n|}{|n^2 - 1|} \leq C_0 \|S\|_{L^2(0, 2\pi)} \leq C_0 \|S\|_{L^\infty(0, 2\pi)}$.

Similarly, set $D_0^2 = \sum_{n \neq \pm 1} n^2 |n^2 - 1|^{-2}$, we have $\|F'\|_{L^\infty} \leq D_0 \|S\|_{L^\infty(0, 2\pi)}$.

Furthermore, $0 = w_1(0) = F(0) + A$, and $0 = (w_1)'(0) = F'(0) + B$, then, A and B are well defined. w_1 is also bounded, i.e. there exists $M_1 > 0$ such that $\|w_1\|_{W^{1,\infty}(0, +\infty)} \leq M_1$.

Notice that from equation (28), w_1 belongs to $W^{2,\infty}$.

Then we get an equation similar to (27) for w_2^ε with $S \equiv 0$ and the same assumption for the same f_ε and the new g_ε : $\bar{g}_\varepsilon(s, w) = g_\varepsilon(s, w_1 + w)$.

$$\begin{cases} (w_2^\varepsilon)'' + (w_2^\varepsilon) = f_\varepsilon(s) + \varepsilon \bar{g}_\varepsilon(s, w_2^\varepsilon), \\ (w_2^\varepsilon)(0) = 0, \quad (w_2^\varepsilon)'(0) = 0. \end{cases} \quad (29)$$

Step 2: energy estimate

Second, we get an energy estimate for w_2^ε . We fix $R > 0$ such that R is greater than the uniform bound M_1 obtained for w_1 and yet $R = M_1 + \rho$ with $\rho > 0$. Let us define

$$2E(s) = ((w_2^\varepsilon)'(s))^2 + (w_2^\varepsilon(s))^2, \quad \bar{E}(s) = \sup_{0 < \tau < s} E(\tau),$$

and T_ε be the first time $T > 0$ such that $2\bar{E}(T) \geq \rho^2$, i.e. ρ estimates the size of (w_2^ε) and $(w_2^\varepsilon)'$.

Multiplying the differential equation (29) by $(w_2^\varepsilon)'$, we have for all $s < T < T_\varepsilon(\rho)$ the following inequalities since $\sup_{0 < \tau < s} |(w_2^\varepsilon)'(\tau)| \leq \sqrt{2\overline{E}(s)}$, and $\int_0^T |f_\varepsilon(s)| ds \leq C\varepsilon T$,

$$\begin{aligned} E(s) &= \int_0^s f_\varepsilon(\tau)(w_2^\varepsilon)'(\tau) d\tau + \varepsilon \int_0^s \overline{g}_\varepsilon(\tau, (w_2^\varepsilon)(\tau))(w_2^\varepsilon)'(\tau) d\tau, \\ &\leq C\varepsilon s \sqrt{2\overline{E}(s)} + \varepsilon s M_R \sqrt{2\overline{E}(s)}, \\ \overline{E}(T) &\leq C\varepsilon T \sqrt{2\overline{E}(T)} + \varepsilon T M_R \sqrt{2\overline{E}(T)}, \\ \varepsilon T &\geq \frac{\sqrt{\overline{E}(T)/2}}{M_R + C}. \end{aligned}$$

Notice that if $2\overline{E}(T) < \rho^2$ for all $T > 0$ then $T_\varepsilon = +\infty$. The critical case is when T_ε is finite and $\overline{E}(T)$ approaches $\rho^2/2$ when T goes to $T_\varepsilon(\rho)$. Thus we have $T_\varepsilon \geq \frac{\rho}{2\varepsilon(M_R + C)}$ and $E(t) \leq \frac{\rho^2}{2}$ for $t \leq T_\varepsilon = \frac{\gamma}{\varepsilon}$ with $\gamma = \frac{\rho}{2(M_R + C)}$.

The proof is similar when $\int_0^s |f_\varepsilon(\tau)| d\tau \leq C\sqrt{\varepsilon}T$ then $T_\varepsilon \geq \frac{\rho}{2\sqrt{\varepsilon}(\sqrt{\varepsilon}M_R + C)}$. \square

For completeness, we state a similar and straightforward version of Lemma 6.3 useful for systems.

Lemma 6.4 [Bounds for large time for systems]

Let $w_\varepsilon = (w_1^\varepsilon, \dots, w_N^\varepsilon)$ be the solution of the following system:

$$\begin{cases} (\lambda_1)^2 (w_k^\varepsilon)'' + (\lambda_k)^2 w_k^\varepsilon = S_k(s) + f_k^\varepsilon(s) + \varepsilon g_k^\varepsilon(s; w_\varepsilon), \\ w_k^\varepsilon(0) = 0, \quad (w_k^\varepsilon)'(0) = 0, \quad k = 1, \dots, N. \end{cases} \quad (30)$$

If source terms satisfy the following conditions where $M > 0, C > 0$ are fixed constants :

1. non resonance conditions with $S_k(s)$ are 2π -periodic functions and $|S_k(s)| \leq M$,

(a) $S_1(s)$ is orthogonal to $e^{\pm is}$, i.e. $\int_0^{2\pi} S_1(s) e^{\pm is} ds = 0$,

(b) $\{\lambda_2, \dots, \lambda_N\} \notin \lambda_1 \mathbb{Z}$,

2. $|f_k^\varepsilon| \leq M$ and for all T , $\int_0^T |f_\varepsilon(s)| ds \leq C\varepsilon T$ or $C\sqrt{\varepsilon}T$,

3. for all $R > 0$: $M_R = \max_k \sup_{\varepsilon \in (0,1), s > 0, w_1^2 + \dots + w_N^2 < R^2} |g_k^\varepsilon(s; u)| < \infty$,

then, there exists $\varepsilon_0 > 0$ and $\gamma > 0$ such that, for $0 < \varepsilon < \varepsilon_0$, w_ε is uniformly bounded in $W^{2,\infty}(0, T_\varepsilon)$, where $T_\varepsilon = \frac{\gamma}{\varepsilon}$ or $\frac{\gamma}{\sqrt{\varepsilon}}$.

Proof : First we remove source terms S_k independent of ε setting $w_k^\varepsilon = w_{k,1} + w_{k,2}^\varepsilon$ where $w_{k,1}$ is the solution of

$$\lambda_1^2 w_{k,1}'' + \lambda_k^2 w_{k,1} = S_k, \quad w_{k,1}(0) = 0, \quad w_{k,1}'(0) = 0.$$

As in the proof of Lemma 6.3, $w_{1,1}$ belongs in $W^{2,\infty}$ thanks to the non-resonance condition 1.(a). For $k \neq 1$, there is no resonance since $\frac{\lambda_k}{\lambda_1} \notin \mathbb{Z}$, i.e. the non-resonance condition 1.(b), thus a similar expansion also yields $w_{k,1}$ belongs in $W^{2,\infty}(\mathbb{R}, \mathbb{R})$.

Now $w_{k,2}^\varepsilon$ are solutions of the following system for $k = 1, \dots, N$

$$\begin{cases} \lambda_1^2 (w_{k,2}^\varepsilon)'' + \lambda_k^2 (w_{k,2}^\varepsilon) = f_k^\varepsilon(s) + \varepsilon \overline{g}_k^\varepsilon(s; w_2^\varepsilon), \\ (w_{k,2}^\varepsilon)(0) = 0, \quad (w_{k,2}^\varepsilon)'(0) = 0, \end{cases}$$

with $w_\varepsilon = w_1 + w_2^\varepsilon$, $w_2^\varepsilon = (\dots, w_{k,2}^\varepsilon, \dots)$ and $\bar{g}_k^\varepsilon(s; \dots, w_k, \dots) = g_k^\varepsilon(s; \dots, w_{k,1} + w_k, \dots)$. The end of the proof of Lemma 6.4 is a straightforward generalization of the the proof of

Lemma 6.3 with the energy: $2E(w_1, \dots, w_N) = \sum_{k=1}^N ((\lambda_1)^2 (\dot{w}_k)^2 + (\lambda_k)^2 w_k^2)$. \square

For systems, we also have to work with linear combination of periodic functions with different periods and nonlinear function of such sum. So we work with the adherence in $L^\infty(\mathbb{R}, \mathbb{C})$ of $\text{span}\{e^{i\lambda t}, \lambda \in \mathbb{R}\}$, namely the set of almost periodic functions $C_{ap}^0(\mathbb{R}, \mathbb{C})$, and the Hilbert space of almost-periodic function is $L_{ap}^2(\mathbb{R}, \mathbb{C})$, see [6], with the scalar product

$$\langle u, v \rangle = \lim_{T \rightarrow +\infty} \frac{1}{T} \int_0^T u(t) \overline{v(t)} dt.$$

We give an useful Lemma about the spectrum of $|u|$ for $u \in C_{ap}^0(\mathbb{R}, \mathbb{R})$. Let us recall definitions for the Fourier coefficients of u associated to frequency λ : $c_\lambda[u]$ and its spectrum: $Sp[u]$,

$$c_\lambda[u] = \langle u, e^{i\lambda t} \rangle = \lim_{T \rightarrow +\infty} \frac{1}{T} \int_0^T u(t) e^{-i\lambda t} dt, \quad Sp[u] = \{\lambda \in \mathbb{R}, c_\lambda[u] \neq 0\}. \quad (31)$$

Lemma 6.5 [Property of the spectrum of $|u|$]

Let $u \in C_{ap}^0(\mathbb{R}, \mathbb{R})$ a function with a finite spectrum: $Sp[u] \subset \{\pm\lambda_1, \dots, \pm\lambda_N\}$.

If $(\lambda_1, \dots, \lambda_N)$ are \mathbb{Z} -independent, then $\lambda_k \notin Sp[|u|]$ for all k .

Proof : Notice that $0 \notin Sp[u]$. The result is quite obvious for u^2 . We first prove the result for $f(u^2)$ where f is smooth. Then, we conclude by approximating $|u|$ by a smooth sequence $f_n(u^2) = \sqrt{1/n + u^2}$, and using the L^∞ stability of the spectrum.

Let E be the set of all \mathbb{Z} linear combinations of elements of $S_2 = \{0, \pm\lambda_{kj}^\pm, k, j = 1, \dots, N\}$, where $\lambda_{kj}^\pm = \lambda_k \pm \lambda_j$. Thus $Sp[f(u^2)]$ is a subset of E since $Sp[u^2] \subset S_2$.

Notice that $\lambda_{jk}^\pm = \pm\lambda_{kj}^\pm$, $\lambda_{kk}^- = 0$, $\lambda_{kk}^+ = 2\lambda_k = \lambda_{kj}^+ + \lambda_{kj}^-$.

Choosing $k = 1$ for instance, so $\lambda_1 \neq 0$, it suffices to prove that $\lambda_1 \notin E$.

Assume the converse, i.e., $\lambda_1 \in E$. Then, for $k < j$, there exists some integers $(c_{kj}^\pm)_{k < j}$ such that: $\lambda_1 = \sum_{k < j} (c_{kj}^+ \lambda_{kj}^+ + c_{kj}^- \lambda_{kj}^-)$. Therefore, defining c_{jk}^\pm by $\pm c_{kj}^\pm$ for $k < j$, we have:

$$\lambda_1 = \lambda_1 \sum_{j \neq 1} (c_{1j}^+ + c_{1j}^-) + \lambda_2 \sum_{j \neq 2} (c_{2j}^+ + c_{2j}^-) + \dots + \lambda_N \sum_{j \neq N} (c_{k=Nj}^+ + c_{k=Nj}^-).$$

Using the \mathbb{Z} -independence, with $d_{kj} = c_{kj}^+ + c_{kj}^-$ for $k \neq j$ and $d_{kk} = 0$, we have following system: $1 = D_1 = \sum_j d_{1j}$, $0 = D_k = \sum_j d_{kj}$, for all $k > 1$.

Summing up, the $N - 1$ last equations in $\frac{\mathbb{Z}}{2\mathbb{Z}}$, and using the fact: $d_{jk} \equiv d_{kj}$ modulo 2, we

have: $0 \equiv \sum_{k=2}^N D_k \equiv \sum_{j=2}^N d_{1j} + 2 \sum_{k < j} d_{kj} \equiv \sum_{j=2}^N d_{1j}$, then $D_1 \equiv 0$, i.e. D_1 is even. It's impossible since $D_1 = 1$. So $\lambda_1 \notin E$ and the proof is complete. \square

6.2 Bounds for the remainders

Now, we prove each asymptotic expansion given in previous sections, i.e. we bound each remainders with energy estimates up to a large time.

Proof of Proposition 2.1 : First we give the outline of the proof.

Notice that all these computations only involve the function \cos . Then, the only way to have a secular term in equations defining v_1 and v_2 is a $\cos(s)$ in the right-hand side. So, the good

choice of α_1 and α_2 , is enough to remove secular term with $\cos(s)$. Now, it suffices to control r_ε for large time. A computation shows that the remainder R_ε of equation (7) satisfies:

$$|R_\varepsilon(s)| \leq C\varepsilon(1 + |r_\varepsilon(s)|) + |\chi_\varepsilon|(v_0, v_1 + \varepsilon r_\varepsilon).$$

Then, r_ε is like w_ε in Lemma 6.3, and the term f_ε comes from χ_ε which is estimated by Lemmas 3.1, 3.2.

More precisely, an exact computation of R_ε in equation (7) leads to

$$R_\varepsilon = \chi_\varepsilon(v_0, v_1 + \varepsilon r_\varepsilon) + \varepsilon H(v_0)r_\varepsilon + \varepsilon \alpha_3^\varepsilon v_\varepsilon'',$$

where α_3^ε is a real constant, bounded uniformly for all $\varepsilon \in [0, 1]$ such that $(\omega_\varepsilon)^2 = \alpha_0 + \varepsilon \alpha_1 + \varepsilon^2 \alpha_2 + \varepsilon^3 \alpha_3^\varepsilon$. From (16) we also have

$$\begin{aligned} & \chi_\varepsilon(v_0, v_1 + \varepsilon r_\varepsilon) \\ = & \left\{ (v_0 + \varepsilon v_1 + \varepsilon^2 r_\varepsilon)_+ - [(v_0)_+ + \varepsilon H(v_0)(v_1 + \varepsilon r_\varepsilon)] \right\} \varepsilon^{-1} \\ = & \left\{ (v_0 + \varepsilon v_1)_+ - [(v_0)_+ + \varepsilon H(v_0)v_1] + (v_0 + \varepsilon v_1 + \varepsilon^2 r_\varepsilon)_+ - (v_0 + \varepsilon v_1)_+ \right\} \varepsilon^{-1} - \varepsilon H(v_0)r_\varepsilon \\ = & \chi_\varepsilon(v_0, v_1) - \varepsilon H(v_0)r_\varepsilon + \varepsilon \tilde{g}_\varepsilon(s, r_\varepsilon), \end{aligned}$$

since $u \rightarrow (u)_+$ is 1-Lipschitz $|\tilde{g}_\varepsilon(s, r_\varepsilon)| = \left\{ (v_0 + \varepsilon v_1 + \varepsilon^2 r_\varepsilon)_+ - (v_0 + \varepsilon v_1)_+ \right\} \varepsilon^{-2} \leq |r_\varepsilon|$. So, with $v_\varepsilon = v_0 + \varepsilon v_1 + \varepsilon^2 r_\varepsilon$, we can rewrite R_ε as follow

$$R_\varepsilon = \chi_\varepsilon(v_0, v_1) + \varepsilon \tilde{g}_\varepsilon(s, r_\varepsilon) + \varepsilon \alpha_3^\varepsilon v_\varepsilon''.$$

Now, we can rewrite equation (7) in the following way

$$-\alpha_0(r_\varepsilon'' + r_\varepsilon) = S(s) + f_\varepsilon(s) + \varepsilon g_\varepsilon(s, r_\varepsilon),$$

with $S = \alpha_2 v_0'' + \alpha_1 v_1'' + H(v_0)v_1$, $f_\varepsilon = \chi_\varepsilon(v_0, v_1) + \varepsilon \alpha_3^\varepsilon (v_0'' + \varepsilon v_1'')$, $g_\varepsilon = \tilde{g}_\varepsilon + \varepsilon^2 \alpha_3^\varepsilon r_\varepsilon$, which allows us to conclude with Lemma 6.3. \square

The proof for other propositions 2.2, 2.3 in section 2 are similar.

We now complete the proof for the asymptotic expansions for systems given in section 4.

Proof of Theorem 4.1 : As in the proof of Proposition 2.1, the same technique is used component by component for Theorems 4.1, with similar energy estimates we can conclude with the Lemma 6.4 for system to control all r_k^ε .

To simplify the writing of the proof, let us assume that $\Phi = Id$ in (17). In this case, a complete computation of the remainder gives us:

$$R_k^\varepsilon = \chi_\varepsilon(a_{k1}v_1^0 - b_k, \sum_j a_{kj}[v_{kj}^1 + \varepsilon r_j^\varepsilon]) + \varepsilon H(a_{k1}v_1^0 - b_k) \sum_j a_{kj}r_j^\varepsilon + \varepsilon \alpha_3^\varepsilon (v_k^\varepsilon)'',$$

with notation of the proof of Proposition 2.1 and $v_k^\varepsilon = v_k^0 + \varepsilon v_k^1 + \varepsilon^2 r_k^\varepsilon$. Let u, v, w be three functions, as previously, we have:

$$\chi_\varepsilon(u, v + \varepsilon w) + \varepsilon H(u)w = \chi_\varepsilon(u, v) + \varepsilon^{-1}((u + \varepsilon v + \varepsilon^2 w)_+ - (u + \varepsilon v)_+),$$

and, since $w \rightarrow w_+$ is 1-Lipschitz: $|\varepsilon^{-1}((u + \varepsilon v + \varepsilon^2 w)_+ - (u + \varepsilon v)_+)| \leq \varepsilon|w|$. Now, we can rewrite R_k^ε as follow:

$$R_k^\varepsilon = \chi_\varepsilon(a_{k1}v_1^0 - b_k, \sum_j a_{kj}v_{kj}^1) + \varepsilon g_k^\varepsilon(s, r_1^\varepsilon, \dots, r_N^\varepsilon) + \varepsilon \alpha_3^\varepsilon (v_k^\varepsilon)'',$$

where g_k^ε is defined by $g_k^\varepsilon(s, r_1^\varepsilon, \dots, r_N^\varepsilon) = \varepsilon^{-1} \{ (V_k^\varepsilon + \varepsilon^2 \sum_j a_{kj}r_j^\varepsilon)_+ - (V_k^\varepsilon)_+ \}$, and $V_k^\varepsilon = a_{k1}v_k^0 - b_k + \varepsilon \sum_j a_{kj}v_{kj}^1$. Notice that g_k^ε satisfies $|g_k^\varepsilon(s, r_1^\varepsilon, \dots, r_N^\varepsilon)| \leq \sum_j |a_{kj}| |r_j^\varepsilon|$.

A key ingredient is the energy $2E = \sum_k (\alpha_0 (r_k')^2 + \lambda_k^2 r_k^2)$ for the homogeneous system: $L_k r_k = 0$, $k = 1, \dots, N$ and the for the inhomogeneous system:

$$-L_k r_k = S_k(s) + f_k^\varepsilon(s) + \varepsilon g_k(s, r_1^\varepsilon, \dots, r_N^\varepsilon),$$

for $k = 1, \dots, N$, with $S_k = H(a_{k1}v_1^0 - b_k) \sum_{j=1}^N a_{kj}v_j^1 + \alpha_2 v_k^{0''} + \alpha_1 v_k^{1''}$, and α_1, α_2 are well chosen to avoid secular term when $k = 1$. Thus, all S_k are 2π periodic. S_1 is not resonant with L_1 . The λ_k are \mathbb{Z} independent. We can apply Lemma 6.4 which is enough to conclude the proof. \square

Proof of Theorem 4.2 : The proof follows two steps. First the solution for linear equations (26) are bounded by $o(t)$. Second, energy estimates are used to bound r^ε .

At the end we prove remark 4.1.

Notice that we do not use Lemmas 3.1, 3.2. Indeed, we have no term with χ_ε . We only use that functions u_+ and v_k^0 are Lipschitz, the Lemma 6.5 to identify resonant terms when $b_k = 0$ and an energy estimate. But, since all modes are excited, the accuracy is weaker than the precision obtained in Theorem 4.1, as in [25].

Step 1: the N problems (26) involves decoupled equations rewritten as follow with $\omega > 0$,

$$\phi''(s) + \omega^2 \phi(s) = S(s) \in C_{ap}^0(\mathbb{R}, \mathbb{R}), \quad \pm\omega \notin Sp[S].$$

There is no resonance since $\pm\omega$ are not in the spectrum of S . But, $Sp[S]$ is dense in \mathbb{R} . Indeed $\lambda_1, \dots, \lambda_N$ are \mathbb{Z} independent. In general, we cannot expect that ϕ is bounded on the real line, see [6], but ϕ is less than $\mathcal{O}(s)$ for large time. We can compute explicitly ϕ

$$\begin{aligned} \phi(s) &= A \cos(\omega s) + B \sin(\omega s) + \psi(s), \\ \omega \psi(s) &= \int_0^s S(\sigma) \sin(\omega(s - \sigma)) d\sigma \\ &= \sin(\omega s) \int_0^s S(\sigma) \cos(\omega \sigma) d\sigma - \cos(\omega s) \int_0^s S(\sigma) \sin(\omega \sigma) d\sigma. \end{aligned}$$

The condition $\pm\omega \notin Sp[S]$ is $\lim_{s \rightarrow +\infty} s^{-1} \int_0^s S(\sigma) \exp(\pm i\omega \sigma) d\sigma = 0$. That is to say

$\int_0^s S(\sigma) \exp(\pm i\omega \sigma) d\sigma = o(s)$ when $s \rightarrow +\infty$, thus ψ and ϕ are negligible compared to s for large time.

Step 2: Let us decompose the remainder in the following way $r_k^\varepsilon = \phi_k + w_k^\varepsilon$. From equation (25) and the previous bound for ϕ_k we have in variable t instead of s_k for convenience

$$L_k w_k^\varepsilon(t) = \mathcal{O}(\varepsilon t) + (\mathcal{O}(\varepsilon \phi_k) + \mathcal{O}(\varepsilon |w^\varepsilon|)) = \mathcal{O}(\varepsilon t) + \mathcal{O}(\varepsilon |w^\varepsilon|),$$

since $\phi_k(t) = o(t)$. Now, we remove the first part of the right hand side with $w_k^\varepsilon = \tilde{w}_k^\varepsilon + z_k^\varepsilon$ and \tilde{w}_k^ε is solution of $L_k \tilde{w}_k^\varepsilon = \mathcal{O}(\varepsilon t)$. Classical energy estimates (or explicit computations as for ϕ) yields to $\tilde{w}_k^\varepsilon(t) = \mathcal{O}(\varepsilon t^2)$. Thus there exists a constant $C_1 > 0$ such that z_k^ε satisfies

$$|L_k z_k^\varepsilon| \leq C(\varepsilon^2 t^2 + \varepsilon |z^\varepsilon|).$$

Multiplying each inequality by $|z_k^\varepsilon|'$, summing up with respect to k , integrating on $[0, T]$, by Cauchy-Schwarz inequality, with $D = 2C(\min(\lambda_k) + \min(\lambda_k)^2)$ we get

$$\begin{aligned} E(T) &= \sum_{k=1}^N (\lambda_1^2 ((z_k^\varepsilon)')^2 + \lambda_k^2 (z_k^\varepsilon)^2) \\ &\leq 2C\varepsilon^2 T^2 \int_0^T \sum_{k=1}^N |(z_k^\varepsilon)'|(t) dt + 2C\varepsilon \int_0^T |(z^\varepsilon)' \cdot z^\varepsilon| dt \\ &\leq D\varepsilon^2 T^{2.5} \sqrt{\int_0^T E(t) dt} + D\varepsilon \int_0^T E(t) dt. \end{aligned}$$

Let $Y(T)$ be $\int_0^T E(t)dt$, thus $Y(0) = 0$ and for all $t \in [0, T]$,

$$E(t) = Y'(t) \leq D\varepsilon^2 T^{2.5} \sqrt{Y(t)} + D\varepsilon Y(t).$$

Since $\int_0^Y \frac{dy}{A\sqrt{y} + y} = 2 \ln \left(1 + \frac{\sqrt{y}}{A} \right)$ we obtain $\sqrt{Y(T)} \leq \varepsilon T^{2.5} \exp(D\varepsilon T)$ and then

$$E(T) \leq 2D\varepsilon^3 T^5 \exp(D\varepsilon T).$$

Finally $r_k^\varepsilon = \phi_k + \tilde{w}_k^\varepsilon + z_k^\varepsilon = o(T) + \mathcal{O}(\varepsilon T^2) + \mathcal{O}(\varepsilon^{1.5} T^{2.5} \exp(D\varepsilon T))$, so for any $T_\varepsilon = o(\varepsilon^{-1})$ we have in $W^{1,\infty}(0, T_\varepsilon)$ for all $T \leq T_\varepsilon$

$$\varepsilon r_\varepsilon(T) = o(\varepsilon T_\varepsilon) + \mathcal{O}(\varepsilon^2 T_\varepsilon^2) + \mathcal{O}(\varepsilon^{2.5} T_\varepsilon^{2.5}),$$

which is enough to have the convergence in $W^{1,\infty}(0, T_\varepsilon)$. Furthermore r_k^ε satisfies the second order differential equation (24) which is enough to get the convergence in $W^{2,\infty}$.

About remark 4.1: From Theorem 4.2, this result is obvious. Let us explain why we cannot go further up to the order ε^2 .

Unfortunately S_k is not periodic since v_j^1 is quasi-periodic for $j \neq 1$. Indeed, the following initial conditions $v_k^1(0) = 0$, $(v_k^1)'(0) = 0$, $k \neq 1$, yields to a quasi-periodic function, sum of two periodic functions with different periods 2π and $2\pi\lambda_1/\lambda_k$, thus a globally bounded function $v_k^1(s) = \phi_k^1(s) - \phi_k^1(0) \cos\left(\frac{\lambda_k}{\lambda_1}s\right)$. So we cannot apply Lemma 6.4.

Let us decompose $S_k = P_k + Q_k$ for $k \neq 2$ where P_k is periodic and Q_k is almost-periodic

$$Q_k(s) = -H(a_{k1}v_1^0(s) - b_k) \sum_{j=1}^N a_{kj} \phi_j^1(0) \cos\left(\frac{\lambda_j}{\lambda_1}s\right).$$

Let w_k be a solution of $-L_k w_k = Q_k$ then $Sp[w_k] \in \bigcup_j \left\{ \pm \frac{\lambda_j}{\lambda_1} + \mathbb{Z} \right\}$, so the spectrum of w_k is discrete and there is resonance in the $N - 1$ equations, $-L_k r_k^\varepsilon = S_k + \dots$, $k \neq 1$ and the expansion does not still valid for time of the order ε^{-1} . \square

Acknowledgments: we thank Alain Léger, Vincent Pagneux and Stéphane Roux for their valuable remarks at the fifth meeting of the GDR US, Anglet, 2008. We also thank Gérard Iooss for fruitful discussions.

References

- [1] Arquier, R.; Bellizzi, S.; Bouc, R.; Cochelin, B. (2006). *Two methods for the computation of nonlinear modes of vibrating systems at large amplitude*, Comput. & Structures, 84, no. 24-25, 1565–1576.
- [2] Attouch, H.; Cabot, A.; Redont, P. (2002). *The dynamics of elastic shocks via epigraphical regularization of a differential inclusion. Barrier and penalty approximations*. Adv. Math. Sci. Appl. 12, no. 1, 273–306.
- [3] Berthelin, F.; Junca, S. (2010) *Averaging Lemmas with a force term in the transport equation*. J. Math. Pures Appl. (9) 93, no. 2, 113–131.
- [4] Clarke, F. H. (1990). Optimization and nonsmooth analysis. second ed., Classic in Applied Mathematics, SIAM, Padelphia, PA.
- [5] Cohen, D.; Hairer, E.; Lubich CH. (2008). *Long-time analysis of non linearly perturbed wave equations via modulated Fourier expansions*. Arch. Ration. Mech. Anal. 187, no. 2, 341–368.

- [6] Corduneanu, C. (1968). Almost periodic functions. Interscience Tracts in Pure and Applied Mathematics, No. 22. Interscience Publishers [John Wiley & Sons], New York-London-Sydney.
- [7] Ekeland, I. (1990). Convexity methods in Hamiltonian mechanics. Results in Mathematics and Related Areas (3), 19. Springer-Verlag, Berlin.
- [8] Hazim, H.; Rousselet, B. (2009). *Finite Elements for a Beam System with Nonlinear Contact Under Periodic Excitation*. Ultrasonic Wave Propagation in Non Homogeneous Media. Springer proceedings in physics 128, 149–160.
- [9] Iooss, G.; Lombardi, E. (2010). *Approximate invariant manifolds up to exponentially small terms*. J. Differential Equations 248, no. 6, 1410–1431.
- [10] Jiang, D.; Pierre, C.; Shaw, S.W. (2004). *Large-amplitude non-linear normal mode of piecewise linear systems*. J. Sound Vibration, 272, no. 3-5, 869–891.
- [11] Junca, S. (2010). *High oscillations and smoothing effect for nonlinear scalar conservation laws*, preprint.
- [12] Junca, S.; Lombard, B. (2009). *Dilatation of a one-dimensional nonlinear crack impacted by a periodic elastic wave*. SIAM J. Appl. Math. 70, no. 3, 735–761.
- [13] Junca, S.; Rousselet, B. (2009) *Asymptotic Expansions of Vibrations with Small Unilateral Contact*. Ultrasonic Wave Propagation in Non Homogeneous Media, Springer proceedings in physics 128, 173–182.
- [14] Keller, J.B.; Kogelman, S. (1970). *Asymptotic solutions of initial value problems for nonlinear partial differential equations*. S.I.A.M. J. Appl. Math. 18, 748-758.
- [15] Kerschen, G.; Peeters, M.; Golinval, J.C.; Vakakis, A.F. (2009). *Nonlinear normal modes, Part I: A useful framework for the structural dynamics*. Mechanical Systems and Signal Processing, 23, 170–194.
- [16] Kevorkian, J.; Cole, Julian D. (1981). Perturbation methods in applied mathematics. Applied Mathematical Sciences, 34. Springer-Verlag, New York-Berlin.
- [17] Kevorkian, J.; Cole, J. (1996). Multiple Scale and Singular Perturbations Problems, Applied Mathematical Sciences, volume 114, Springer, Berlin.
- [18] Miller, P.D. (2006). Applied Asymptotic Analysis, American Mathematical Society, Providence, Rhode Island, volume 75.
- [19] Nayfeh, A. H. (1981). Introduction to perturbation techniques. Wiley-Interscience [John Wiley & Sons], New York.
- [20] Paoli, L.; Schatzman, M. (1998). *Resonance in impact problems*, Mathl. Comput. Modelling, 28, 4-8, 385–406.
- [21] Powell, M.J.D. (1964). *An efficient method for finding the minimum of a function of several variables without calculating derivatives*. Comput. J. 7, 155–162.
- [22] Roseau, M. (1984). Vibrations des systèmes mécaniques. Méthodes analytiques et applications. Masson, Paris.
- [23] Rosenberg, R.M. (1966). *On non linear vibrations of systems with many degrees of freedom*. Advances in Applied Mechanics, 242 (9), 155–242.
- [24] Rousselet, B.; Vanderborck, G. (2006). *Non destructive control of cables: O.D.E. models of non linear vibrations*. Variational Formulations in Mechanics : Theory and Applications - A Workshop dedicated to the 60th Birthday of Professor Raül A. Feijoo.
- [25] Sánchez-Palencia, E. (1978). *Justification de la méthode des échelles multiples pour une classe d'équations aux dérivées partielles*. (French) Ann. Mat. Pura Appl. (4) 116, 159–176.
- [26] *Scilab software*. Copyright scilab INRIA ENPC, www.scilab.org.
- [27] Vanderborck, G.; Rousselet, B. (2005). *Structural damage detection and localization by non-linear acoustic spectroscopy*, Saviac, 76th Shock and Vibration Symposium, October 31 - November 3, 2005, Destin (Florida / USA).

- [28] Van Dyke, M. (1975). *Perturbation Methods in Fluid Mechanics*. Annotated Edition, Parabolic Press, Stanford, CA.
- [29] Verhulst, F. (1996). *Nonlinear differential equations and dynamical systems*. Translated from the 1985 Dutch original. Second edition. Universitext. Springer-Verlag, Berlin.
- [30] Vestroni, F.; Luongo, A.; Paolone, A. (2008). *A perturbation method for evaluating nonlinear normal modes of a piecewise linear two-degrees-of-freedom system*. *Nonlinear Dynam.* 54, no. 4, 379–393.